

Paradise Regional Recreation Center Concept Design

Presented By:
Bruce C. Brown, Assistant District Manager

021

Paradise Recreation Project Status

- Completed Property Survey, Utilities Survey & Locates, Grade Assessment & Concept Facility Design & Architect's site plan;
- Incorporates Resident feedback into concept design and inclusion of desired amenities. Concept takes away no existing amenities and adds several new amenities;
- Optimally utilizes all available space, maintains parking stall numbers for both the Residents & Church;
- Provides dramatic views and overlook areas above Lake Paradise. Brand new facility with all new amenities;

Paradise Recreation Project Status

- Concept Design, which is based on existing Regional Recreation Center plans. Adds 10,000 Square Feet to current Paradise Footprint & eliminates multiple elevation floorplans;
- Potentially save \$400-500K by utilizing already approved Regional Recreation Center construction plans (with some modifications to enhance views & expand/optimize space use & layout);
- Adds New Amenities: Natural Gas Fire Pit with Lake Overlook & Picnic Area, Walking Trail, and a Resort Style Pool;
- Provides dramatic views and overlook areas above Golfview Lake;

Paradise Rebuild Project Status

- Preserves all of the historic majestic Live Oaks;
- Improves grade and functionality of all interior spaces;
- Maximize the views over the lake (fire pit, expanded seating and picnic areas, large plate glass overlook windows in key areas);
- Expands the Mark Twain Library Space;
- Maintains the Spanish architecture and historic look and feel of the original Paradise Recreation Center;

Paradise Regional Recreation Center



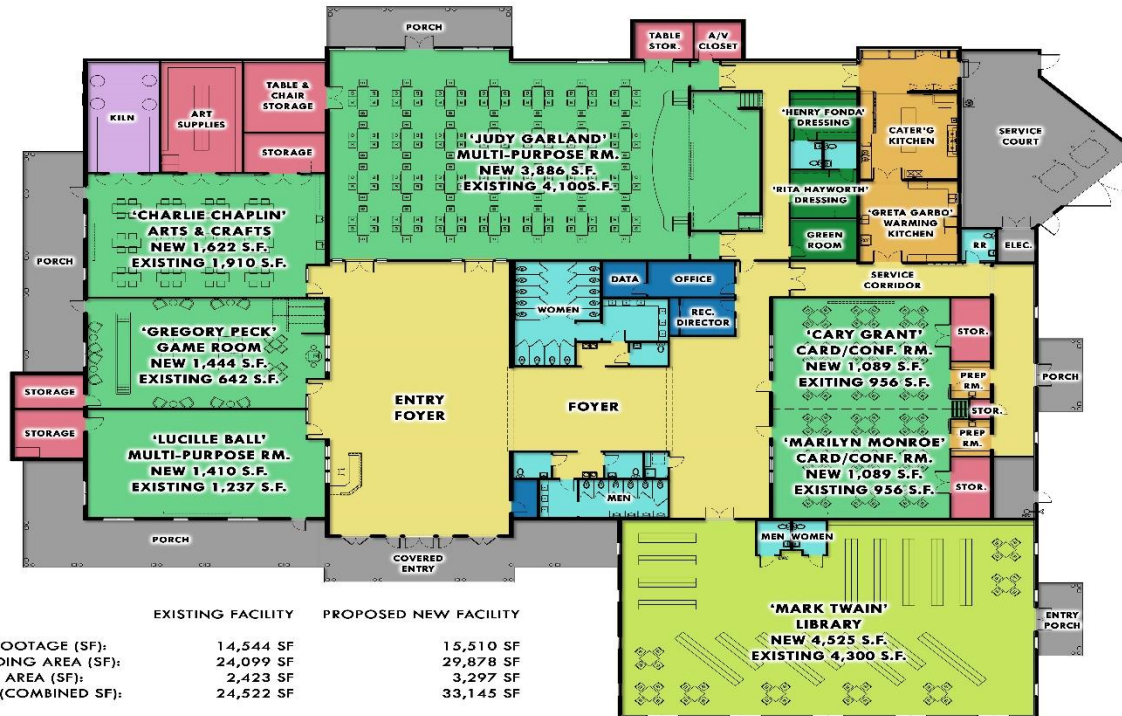
Paradise Regional Recreation Center



The Villages®
Community Development Districts

www.DistrictGov.org | Customer Service 352-753-4508
Hospitality • Stewardship • Creativity & Innovation • Hard Work

Paradise Regional Recreation Center



Paradise Regional Recreation Center
Conceptual Floor Plan

Paradise Regional Recreation Center



The Villages®
Community Development Districts

www.DistrictGov.org | Customer Service 352-753-4508
Hospitality • Stewardship • Creativity & Innovation • Hard Work

Paradise Recreation Decision Points

- Concept plan is not final. We will still make adjustments to maximize square footage & expansion of usable space;
- We will likely reposition some rooms & storage areas to increase opportunity to increase views & overlooks of the trees & lake;
- Evaluating options to expand exterior amenities on rear of facility (expanded porch areas, paver seating areas, etc);
- Recommend AAC review over the next several weeks. DPM will leave the drawings on display at Paradise & Savannah for residents to review and submit all feedback & recommendations to bruce.brown@districtgov.org and john.rohan@districtgov.org;

Committee Discussion

Thank you!