

ORDINANCE NO. 2010- 06

AN ORDINANCE OF THE BOARD OF COUNTY COMMISSIONERS OF SUMTER COUNTY, FLORIDA, AMENDING ORDINANCE 04-36 TO AMEND THE BOUNDARY OF THE VILLAGE COMMUNITY DEVELOPMENT DISTRICT NO. 8; PROVIDING FOR SEVERABILITY; AND PROVIDING FOR AN EFFECTIVE DATE.

WHEREAS, the Board of County Commissioners established the Village Community Development District No. 8 ("District") by Ordinance 04-36; and

WHEREAS, in the process of going forward with development activities it has come to the attention of the developer that additional changes are necessary in the boundary to add 28.5 acres.

NOW THEREFORE, BE IT ORDAINED by the Board of County Commissioners of Sumter County, Florida, as follows:

Section 1. Ordinance 04-36 is hereby amended so that the external boundary of the District shall be as per Exhibit "A" attached hereto.

Section 2. All ordinances or parts of ordinances in conflict herewith be and the same are hereby repealed to the extent of such conflict.

Section 3. If any section, sentence, clause, or phrase of this ordinance is held to be invalid or unconstitutional by a court of competent jurisdiction, then said holding shall in no way affect the validity of the remaining portions of this ordinance.

Section 4. This ordinance shall become effective in accordance with law.

PASSED this 27 day of April, 2010.

ATTEST: GLORIA HAYWARD
CLERK OF CIRCUIT COURT

BOARD OF COUNTY
COMMISSIONERS
SUMTER COUNTY, FLORIDA



Gloria Hayward
DEPUTY CLERK

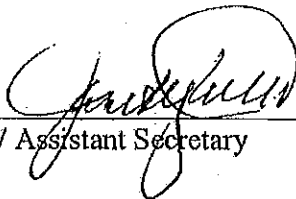
Doug Gilpin
DOUG GILPIN, CHAIRMAN

SECTION 3. This Resolution shall take effect immediately upon its adoption.

PASSED AND ADOPTED this 19th day of March, 2010.

ATTEST:

VILLAGE COMMUNITY
DEVELOPMENT DISTRICT NO. 8


Secretary / Assistant Secretary

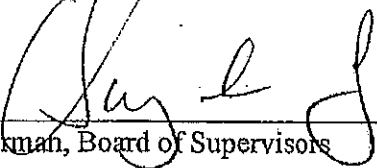
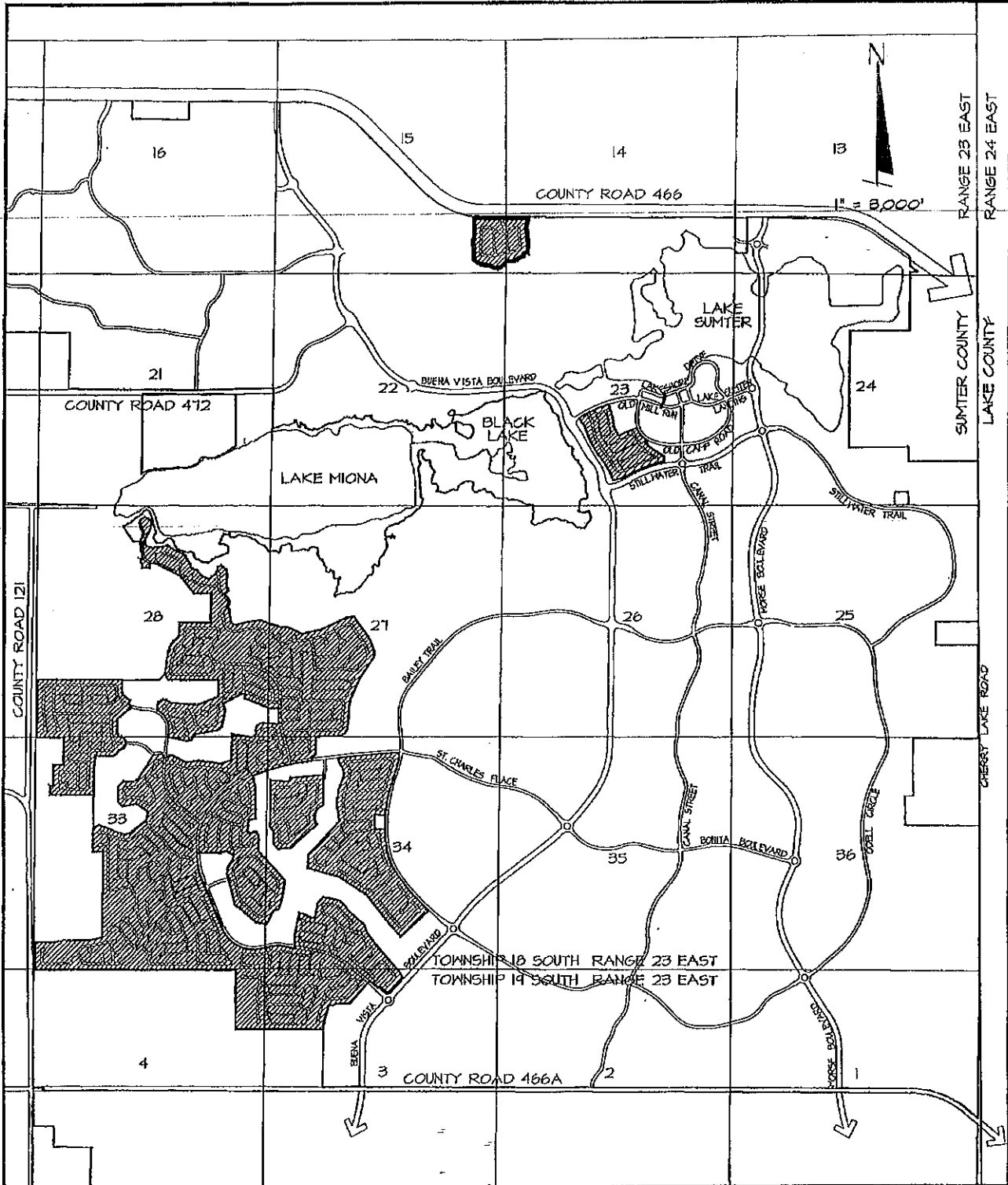

By: 
Chairman, Board of Supervisors

EXHIBIT A



LEGEND

 AMENDED DISTRICT
No. 8 BOUNDARY

Arnett
Environmental, LLC

1038 Lake Sumner Landing The Villages, FL 32162
Tel No. (352)753-4747 Fax No. (352)753-1296
Certificate of Authorization Number: 27495

VILLAGE
COMMUNITY
DEVELOPMENT
DISTRICT No. 8

AMENDED VILLAGE COMMUNITY DEVELOPMENT DISTRICT No. 8

EXHIBIT A

DESCRIPTION OF THE AMENDED
VILLAGE COMMUNITY DEVELOPMENT DISTRICT NO. 8
APPROXIMATELY 1098.1 ACRES

THOSE PORTIONS OF SECTIONS 14, 15, 23, 27, 28, 33 AND 34, TOWNSHIP 18 SOUTH, RANGE 23 EAST, AND SECTIONS 3 AND 4, TOWNSHIP 19 SOUTH, RANGE 23 EAST, ALL IN SUMTER COUNTY, FLORIDA, DESCRIBED AS FOLLOWS:

BEGIN AT THE NORTHWEST CORNER OF SAID SECTION 33; THENCE S89°32'36"E, ALONG THE NORTH LINE OF THE NORTHWEST 1/4 OF SAID SECTION 33, A DISTANCE OF 630.03 FEET TO A POINT ON THE BOUNDARY OF LANDS DESCRIBED IN OFFICIAL RECORDS BOOK 1068, PAGE 413, PUBLIC RECORDS OF SUMTER COUNTY, FLORIDA; THENCE ALONG SAID BOUNDARY THE FOLLOWING COURSES: RUN S00°32'21"W, 630.00 FEET; THENCE N89°31'06"W, 210.00 FEET; THENCE S00°32'21"W, 480.00 FEET; THENCE DEPARTING SAID BOUNDARY OF LANDS DESCRIBED IN OFFICIAL RECORDS BOOK 1068, PAGE 413, RUN N89°31'06"W, 84.04 FEET MORE OR LESS TO A POINT 336 FEET EAST OF THE WEST LINE OF THE NORTHWEST 1/4 OF THE NORTHWEST 1/4 OF SAID SECTION 33; THENCE SOUTH ALONG A LINE PARALLEL WITH AND 336 FEET EAST OF SAID WEST LINE, 204.26 FEET MORE OR LESS TO THE SOUTH LINE OF THE NORTHWEST 1/4 OF THE NORTHWEST 1/4 OF SAID SECTION 33; THENCE EAST ALONG SAID SOUTH LINE 988.5 FEET MORE OR LESS TO THE SOUTHEAST CORNER OF THE NORTHWEST 1/4 OF THE NORTHWEST 1/4 OF SAID SECTION 33; THENCE NORTH ALONG THE EAST LINE OF THE NORTHWEST 1/4 OF THE NORTHWEST 1/4 OF SAID SECTION 33 A DISTANCE OF 630 FEET TO A POINT ON THE BOUNDARY OF LANDS DESCRIBED IN OFFICIAL RECORDS BOOK 1292, PAGE 594, OFFICIAL RECORDS OF SUMTER COUNTY, FLORIDA; THENCE N09°50'45"E, 101.94 FEET; THENCE N00°39'19"E, 163.35 FEET; THENCE N89°25'39"E, 428.61 FEET; THENCE N59°02'06"E, 70.31 FEET; THENCE N30°58'08"E, 104.71 FEET; THENCE N72°45'43"E, 126.57 FEET; THENCE N31°04'43"E, 107.72 FEET; THENCE N02°08'34"E, 48.51 FEET; THENCE N23°41'32"W, 111.23 FEET; THENCE N58°06'08"W, 71.09 FEET; THENCE S85°31'19"W, 78.98 FEET; THENCE N14°59'00"W, 103.67 FEET; THENCE N00°14'58"E, 310.32 FEET; THENCE N51°16'04"E, 389.58 FEET; THENCE, ALONG A RADIAL LINE, N18°58'32"E, 57.01 FEET TO A POINT ON THE ARC OF A CURVE CONCAVE NORTHEASTERLY, AND HAVING A RADIUS OF 650.00 FEET, AND A CHORD BEARING AND DISTANCE OF N67°20'48"W, 83.39 FEET; THENCE NORTHWESTERLY ALONG THE ARC OF SAID CURVE, THROUGH A CENTRAL ANGLE OF 07°21'21", AN ARC DISTANCE OF 83.45 FEET; THENCE ALONG A RADIAL LINE, N26°19'53"E, 105.32 FEET; THENCE N60°40'08"W, 66.91 FEET; THENCE N46°51'13"W, 153.55 FEET; THENCE N03°46'40"W, 328.16 FEET TO THE NORTH LINE OF THE SOUTH 1/2 OF THE SOUTHWEST 1/4 OF SAID SECTION 28; THENCE N89°34'36"W, ALONG SAID NORTH LINE, 1936.58 FEET TO THE NORTHWEST CORNER OF SAID SOUTH 1/2 OF THE SOUTHWEST 1/4 OF SECTION 28; THENCE S00°30'01"W, ALONG THE WEST LINE THEREOF, 1318.63 FEET TO THE POINT OF BEGINNING.

LESS ANY PORTION THEREOF LYING WITHIN THE RIGHT OF WAY OF COUNTY ROAD NO. 121.

AND

COMMENCE AT THE NORTHEAST CORNER OF SAID SECTION 4; THENCE N89°38'03"W, ALONG THE NORTH LINE OF THE EAST 1/2 OF THE NORTHEAST 1/4 OF THE NORTHEAST 1/4 OF SAID SECTION 4, A DISTANCE OF 661.34 FEET TO THE NORTHWEST CORNER THEREOF, SAID POINT ALSO BEING THE POINT OF BEGINNING; THENCE S00°25'57"W, ALONG THE WEST LINE OF SAID EAST 1/2 OF NORTHEAST 1/4 OF THE NORTHEAST 1/4, A DISTANCE OF 1331.77 FEET TO THE SOUTHWEST CORNER THEREOF; THENCE S89°34'02"E, ALONG THE SOUTH LINE OF SAID EAST 1/2 OF THE NORTHEAST 1/4 OF THE NORTHEAST 1/4, A DISTANCE OF 660.08 FEET TO THE SOUTHEAST CORNER THEREOF; THENCE S89°34'12"E, ALONG THE SOUTH LINE OF THE NORTHWEST 1/4 OF THE NORTHWEST 1/4 OF SAID SECTION 3, A DISTANCE OF 1326.15 FEET; THENCE DEPARTING SAID SOUTH LINE, RUN N09°15'48"E, 194.67 FEET; THENCE N14°48'48"E, 363.42 FEET; THENCE

N89°36'08"E, 110.96 FEET; THENCE N70°00'54"E, 56.89 FEET; THENCE N87°18'16"E, 65.76 FEET; THENCE N89°54'18"E, 260.63 FEET; THENCE N39°56'28"E, 621.66 FEET; THENCE ALONG A RADIAL LINE, N42°30'02"E, 60.00 FEET TO A POINT ON THE ARC OF A CURVE CONCAVE SOUTHWESTERLY, AND HAVING A RADIUS OF 6490.00 FEET, AND A CHORD BEARING AND DISTANCE OF S47°19'17"E, 40.38 FEET; THENCE SOUTHEASTERLY ALONG THE ARC OF SAID CURVE, THROUGH A CENTRAL ANGLE OF 00°21'23", AN ARC DISTANCE OF 40.38 FEET; THENCE S47°08'35"E, 88.59 FEET; THENCE S57°15'50"E, 91.68 FEET TO THE POINT OF CURVATURE OF A CURVE CONCAVE SOUTHWESTERLY AND HAVING A RADIUS OF 250.00 FEET; THENCE SOUTHEASTERLY ALONG THE ARC OF SAID CURVE THROUGH A CENTRAL ANGLE OF 07°28'24", AN ARC DISTANCE OF 32.61 FEET; THENCE N87°51'25"E, 71.09 FEET; THENCE S47°08'35"E, 162.62 FEET; THENCE N87°52'13"E, 68.00 FEET; THENCE N42°51'25"E, 454.51 FEET; THENCE N28°14'57"W, 127.68 FEET; THENCE N41°47'57"W, 799.89 FEET; THENCE N36°22'41"W, 391.71 FEET; THENCE N18°36'28"W, 177.72 FEET; THENCE N47°29'39"W, 533.43 FEET; THENCE N32°01'28"W, 75.07 FEET; THENCE N48°51'26"W, 178.79 FEET; THENCE N72°28'18"W, 111.67 FEET; THENCE N79°50'00"W, 268.48 FEET; THENCE S48°51'42"W, 176.81 FEET; THENCE S10°23'25"W, 356.00 FEET; THENCE N79°50'00"W, 106.22 FEET; THENCE N61°10'17"W, 159.09 FEET; THENCE N79°10'32"W, 89.89 FEET; THENCE S12°52'15"W, 223.07 FEET TO THE POINT OF CURVATURE OF A CURVE CONCAVE EASTERLY AND HAVING A RADIUS OF 2635.42 FEET; THENCE SOUTHERLY ALONG THE ARC OF SAID CURVE THROUGH A CENTRAL ANGLE OF 04°54'44", AN ARC DISTANCE OF 225.95 FEET TO THE POINT OF COMPOUND CURVATURE OF A CURVE CONCAVE EASTERLY AND HAVING A RADIUS OF 458.50 FEET; THENCE SOUTHERLY ALONG THE ARC OF SAID CURVE THROUGH A CENTRAL ANGLE OF 09°07'04", AN ARC DISTANCE OF 72.96 FEET; THENCE S01°09'33"E, 282.36 FEET; THENCE N79°50'00"W, 279.69 FEET TO THE POINT OF CURVATURE OF A CURVE CONCAVE SOUTHERLY AND HAVING A RADIUS OF 770.00 FEET; THENCE WESTERLY ALONG THE ARC OF SAID CURVE THROUGH A CENTRAL ANGLE OF 23°45'28", AN ARC DISTANCE OF 319.28 FEET; THENCE S76°24'32"W, 178.28 FEET TO THE POINT OF CURVATURE OF A CURVE CONCAVE NORTHEASTERLY AND HAVING A RADIUS OF 780.00 FEET; THENCE NORTHWESTERLY ALONG THE ARC OF SAID CURVE THROUGH A CENTRAL ANGLE OF 81°38'00", AN ARC DISTANCE OF 1111.32 FEET; THENCE N21°57'28"W, 1137.53 FEET TO THE POINT OF CURVATURE OF A CURVE CONCAVE EASTERLY AND HAVING A RADIUS OF 1780.00 FEET; THENCE NORTHERLY ALONG THE ARC OF SAID CURVE THROUGH A CENTRAL ANGLE OF 19°30'44", AN ARC DISTANCE OF 606.18 FEET; THENCE N02°26'43"W, 62.83 FEET; THENCE S89°50'47"E, 530.37 FEET; THENCE N60°54'16"E, 41.98 FEET; THENCE N74°15'04"E, 74.86 FEET; THENCE S60°06'20"E, 126.72 FEET; THENCE S76°40'18"E, 65.73 FEET; THENCE S03°14'47"W, 71.12 FEET; THENCE S29°34'38"W, 265.86 FEET; THENCE S08°03'58"W, 125.19 FEET; THENCE S13°56'53"E, 110.91 FEET; THENCE S16°32'50"E, 60.27 FEET; THENCE S14°30'02"E, 580.40 FEET; THENCE S60°15'44"E, 94.31 FEET; THENCE S48°46'28"E, 528.82 FEET; THENCE S80°44'48"E, 243.20 FEET; THENCE N25°18'24"E, 330.10 FEET; THENCE N70°15'40"E, 139.43 FEET; THENCE N16°23'38"E, 290.13 FEET; THENCE N08°10'54"E, 376.05 FEET; THENCE N42°18'37"W, 903.18 FEET; THENCE N02°06'27"E, 158.35 FEET; THENCE N10°10'44"E, 75.62 FEET; THENCE N03°54'25"W, 102.37 FEET; THENCE N26°35'45"W, 78.40 FEET; THENCE N59°15'59"W, 39.77 FEET; THENCE N74°39'47"W, 20.65 FEET; THENCE S81°19'19"W, 19.90 FEET; THENCE S70°39'26"W, 41.15 FEET; THENCE S80°32'46"W, 30.31 FEET; THENCE S90°00'00"W, 17.50 FEET; THENCE N72°47'54"W, 26.88 FEET; THENCE N56°59'59"W, 26.01 FEET; THENCE N35°49'40"W, 27.59 FEET; THENCE N02°40'54"W, 23.79 FEET; THENCE N08°19'56"E, 34.96 FEET; THENCE N16°01'55"E, 41.14 FEET; THENCE N05°04'05"E, 27.11 FEET; THENCE N01°02'04"W, 36.49 FEET; THENCE N06°08'59"E, 36.16 FEET; THENCE N16°53'41"E, 31.47 FEET; THENCE N44°00'09"E, 28.90 FEET; THENCE N65°56'37"E, 55.00 FEET; THENCE N80°23'19"E, 42.49 FEET; THENCE N89°06'45"E, 45.41 FEET; THENCE N00°07'30"W, 461.27 FEET TO THE POINT OF CURVATURE OF A CURVE CONCAVE WESTERLY AND HAVING A RADIUS OF 1650.00 FEET; THENCE NORTHERLY ALONG THE ARC OF SAID CURVE THROUGH A CENTRAL ANGLE OF 11°33'51", AN ARC DISTANCE OF 333.02 FEET; THENCE N11°41'21"W, 195.28 FEET TO A POINT ON THE ARC OF A NON-TANGENT CURVE CONCAVE SOUTHERLY, AND HAVING A RADIUS OF 5400.00 FEET, AND A CHORD BEARING AND DISTANCE OF N76°03'30"E, 1386.13 FEET; THENCE EASTERLY ALONG THE ARC OF SAID CURVE, THROUGH A CENTRAL ANGLE OF 14°44'53", AN ARC DISTANCE OF 1389.96 FEET; THENCE N06°34'04"W, 60.00 FEET; THENCE N35°57'01"E, 128.50 FEET; THENCE N00°00'00"E, 382.96 FEET; THENCE N87°48'34"E, 568.47 FEET; THENCE N60°42'03"E, 111.90 FEET; THENCE N31°26'11"E, 111.19 FEET; THENCE N07°04'42"E, 87.10 FEET; THENCE N05°12'27"E, 581.18 FEET; THENCE N24°01'20"E, 564.44 FEET;

THENCE N32°39'58"E, 562.99 FEET; THENCE N14°49'35"E, 74.65 FEET; THENCE N11°43'20"W, 95.43 FEET; THENCE N20°56'05"W, 237.65 FEET; THENCE N34°48'37"W, 644.17 FEET; THENCE S83°07'11"W, 178.87 FEET; THENCE S65°13'16"W, 816.99 FEET; THENCE S76°24'17"W, 444.80 FEET; THENCE N65°12'50"W, 338.19 FEET; THENCE N83°55'01"W, 197.28 FEET; THENCE N74°24'08"W, 184.66 FEET; THENCE N68°23'03"W, 286.17 FEET; THENCE S81°18'19"W, 257.28 FEET; THENCE S78°14'18"W, 151.77 FEET; THENCE S78°21'41"W, 67.38 FEET; THENCE S79°08'14"W, 68.31 FEET; THENCE S81°28'58"W, 22.81 FEET; THENCE S89°06'11"W, 41.00 FEET; THENCE N56°38'45"W, 87.44 FEET; THENCE N08°10'27"W, 100.11 FEET; THENCE N07°21'46"W, 211.46 FEET; THENCE N41°20'44"W, 64.94 FEET; THENCE N48°39'16"E, 5.54 FEET TO THE POINT OF CURVATURE OF A CURVE CONCAVE WESTERLY AND HAVING A RADIUS OF 135.00 FEET; THENCE NORTHERLY ALONG THE ARC OF SAID CURVE THROUGH A CENTRAL ANGLE OF 89°04'47", AN ARC DISTANCE OF 209.89 FEET; THENCE N40°25'31"W, 139.46 FEET; THENCE N49°34'29"E, 125.43 FEET; THENCE N25°53'37"W, 94.61 FEET; THENCE N03°49'11"W, 106.00 FEET; THENCE N09°27'04"E, 108.91 FEET; THENCE N03°49'11"W, 174.65 FEET; THENCE N51°35'04"W, 156.88 FEET; THENCE S62°23'36"W, 92.32 FEET; THENCE S06°37'15"W, 98.05 FEET; THENCE S33°38'06"W, 94.67 FEET; THENCE S63°07'49"W, 81.92 FEET; THENCE S00°22'40"W, 0.88 FEET TO A POINT ON THE ARC OF A CURVE CONCAVE SOUTHEASTERLY, AND HAVING A RADIUS OF 13.75 FEET, AND A CHORD BEARING AND DISTANCE OF S42°50'50"W, 3.20 FEET; THENCE SOUTHWESTERLY ALONG THE ARC OF SAID CURVE, THROUGH A CENTRAL ANGLE OF 13°21'13", AN ARC DISTANCE OF 3.20 FEET; THENCE S36°10'13"W, 59.89 FEET; THENCE N68°12'23"W, 92.31 FEET; THENCE N64°41'19"W, 63.82 FEET TO THE POINT OF CURVATURE OF A CURVE CONCAVE NORTHEASTERLY AND HAVING A RADIUS OF 15.00 FEET; THENCE NORTHWESTERLY ALONG THE ARC OF SAID CURVE THROUGH A CENTRAL ANGLE OF 18°57'48", AN ARC DISTANCE OF 4.96 FEET; THENCE N45°43'31"W, 39.88 FEET; THENCE N41°33'17"W, 106.88 FEET TO THE POINT OF CURVATURE OF A CURVE CONCAVE NORTHEASTERLY AND HAVING A RADIUS OF 28.00 FEET; THENCE NORTHWESTERLY ALONG THE ARC OF SAID CURVE THROUGH A CENTRAL ANGLE OF 10°47'18", AN ARC DISTANCE OF 5.27 FEET; THENCE N30°45'59"W, 41.80 FEET TO THE POINT OF CURVATURE OF A CURVE CONCAVE SOUTHWESTERLY AND HAVING A RADIUS OF 7.50 FEET; THENCE NORTHWESTERLY ALONG THE ARC OF SAID CURVE THROUGH A CENTRAL ANGLE OF 49°37'29", AN ARC DISTANCE OF 6.50 FEET; THENCE N80°23'28"W, 77.53 FEET TO THE POINT OF CURVATURE OF A CURVE CONCAVE NORTHEASTERLY AND HAVING A RADIUS OF 6.00 FEET; THENCE NORTHWESTERLY ALONG THE ARC OF SAID CURVE THROUGH A CENTRAL ANGLE OF 28°02'40", AN ARC DISTANCE OF 2.94 FEET; THENCE N52°20'48"W, 76.69 FEET TO THE POINT OF CURVATURE OF A CURVE CONCAVE NORTHEASTERLY AND HAVING A RADIUS OF 8.00 FEET; THENCE NORTHWESTERLY ALONG THE ARC OF SAID CURVE THROUGH A CENTRAL ANGLE OF 42°02'05", AN ARC DISTANCE OF 5.87 FEET; THENCE N10°18'43"W, 76.86 FEET TO THE POINT OF CURVATURE OF A CURVE CONCAVE SOUTHWESTERLY AND HAVING A RADIUS OF 13.00 FEET; THENCE NORTHWESTERLY ALONG THE ARC OF SAID CURVE THROUGH A CENTRAL ANGLE OF 25°13'12", AN ARC DISTANCE OF 5.72 FEET; THENCE N35°31'55"W, 77.54 FEET; THENCE N26°38'23"W, 124.87 FEET TO THE POINT OF CURVATURE OF A CURVE CONCAVE SOUTHWESTERLY AND HAVING A RADIUS OF 8.50 FEET; THENCE NORTHWESTERLY ALONG THE ARC OF SAID CURVE THROUGH A CENTRAL ANGLE OF 29°30'35", AN ARC DISTANCE OF 4.38 FEET; THENCE N56°08'58"W, 59.81 FEET; THENCE N63°45'26"W, 100.06 FEET; THENCE N63°27'44"W, 39.85 FEET; THENCE N60°38'39"W, 100.01 FEET; THENCE N56°15'00"W, 96.32 FEET; THENCE N56°48'27"W, 68.05 FEET TO THE POINT OF CURVATURE OF A CURVE CONCAVE SOUTHERLY AND HAVING A RADIUS OF 7.50 FEET; THENCE WESTERLY ALONG THE ARC OF SAID CURVE THROUGH A CENTRAL ANGLE OF 43°45'14", AN ARC DISTANCE OF 5.73 FEET; THENCE S79°26'19"W, 86.34 FEET; THENCE S80°21'28"W, 118.50 FEET; THENCE N88°50'37"W, 74.11 FEET; THENCE S78°44'39"W, 92.98 FEET; THENCE N83°58'31"W, 64.79 FEET; THENCE N65°22'29"W, 59.36 FEET; THENCE N53°21'50"W, 91.75 FEET; THENCE N11°13'27"W, 0.84 FEET; THENCE N08°09'02"E, 80.92 FEET TO A POINT OF CURVATURE OF A CURVE CONCAVE WESTERLY AND HAVING A RADIUS OF 50.00 FEET; THENCE NORTHERLY ALONG THE ARC OF SAID CURVE THROUGH A CENTRAL ANGLE OF 17°15'04", AN ARC DISTANCE OF 15.05 FEET; THENCE N11°45'22"E, 6.03 FEET; THENCE N22°51'50"E, 74.13 FEET; THENCE N20°57'50"E, 66.30 FEET; THENCE N30°09'07"E, 12.17 FEET; THENCE N32°26'28"E, 95.49 FEET TO THE POINT OF CURVATURE OF A CURVE CONCAVE NORTHWESTERLY AND HAVING A RADIUS OF 26.00 FEET; THENCE NORTHEASTERLY ALONG THE ARC OF SAID CURVE THROUGH A CENTRAL ANGLE OF 14°17'28", AN ARC DISTANCE OF 6.49 FEET; THENCE N18°09'00"E, 89.52 FEET; THENCE N20°40'25"E,

44.60 FEET TO THE POINT OF CURVATURE OF A CURVE CONCAVE WESTERLY AND HAVING A RADIUS OF 8.00 FEET; THENCE NORTHERLY ALONG THE ARC OF SAID CURVE THROUGH A CENTRAL ANGLE OF 34°09'34", AN ARC DISTANCE OF 4.77 FEET; THENCE N13°29'09"W, 49.49 FEET TO THE POINT OF CURVATURE OF A CURVE CONCAVE SOUTHWESTERLY AND HAVING A RADIUS OF 11.75 FEET; THENCE NORTHWESTERLY ALONG THE ARC OF SAID CURVE THROUGH A CENTRAL ANGLE OF 29°39'29", AN ARC DISTANCE OF 6.08 FEET; THENCE N43°08'38"W, 67.40 FEET; THENCE N56°13'09"W, 58.45 FEET; THENCE N70°39'15"W, 59.71 FEET TO THE POINT OF CURVATURE OF A CURVE CONCAVE SOUTHERLY AND HAVING A RADIUS OF 8.00 FEET; THENCE WESTERLY ALONG THE ARC OF SAID CURVE THROUGH A CENTRAL ANGLE OF 50°29'10", AN ARC DISTANCE OF 7.05 FEET; THENCE S58°51'34"W, 107.83 FEET TO THE POINT OF CURVATURE OF A CURVE CONCAVE SOUTHEASTERLY AND HAVING A RADIUS OF 9.25 FEET; THENCE SOUTHWESTERLY ALONG THE ARC OF SAID CURVE THROUGH A CENTRAL ANGLE OF 34°12'23", AN ARC DISTANCE OF 5.52 FEET; THENCE S24°39'12"W, 67.72 FEET TO THE POINT OF CURVATURE OF A CURVE CONCAVE EASTERLY AND HAVING A RADIUS OF 7.00 FEET; THENCE SOUTHERLY ALONG THE ARC OF SAID CURVE THROUGH A CENTRAL ANGLE OF 43°53'24", AN ARC DISTANCE OF 5.36 FEET; THENCE S19°14'12"E, 62.83 FEET; THENCE S25°13'18"E, 74.70 FEET; THENCE S18°50'18"E, 47.23 FEET; THENCE S14°55'54"E, 7.51 FEET; THENCE S34°24'08"E, 42.31 FEET; THENCE S05°10'32"W, 121.04 FEET TO THE POINT OF CURVATURE OF A CURVE CONCAVE NORTHWESTERLY AND HAVING A RADIUS OF 25.00 FEET; THENCE SOUTHWESTERLY ALONG THE ARC OF SAID CURVE THROUGH A CENTRAL ANGLE OF 59°52'27", AN ARC DISTANCE OF 26.12 FEET TO THE POINT OF REVERSE CURVATURE OF A CURVE CONCAVE EASTERLY AND HAVING A RADIUS OF 50.00 FEET; THENCE SOUTHWESTERLY, SOUTHERLY AND SOUTHEASTERLY ALONG THE ARC OF SAID CURVE THROUGH A CENTRAL ANGLE OF 127°25'40", AN ARC DISTANCE OF 111.20 FEET TO THE POINT OF REVERSE CURVATURE OF A CURVE CONCAVE SOUTHWESTERLY AND HAVING A RADIUS OF 25.00 FEET; THENCE SOUTHEASTERLY ALONG THE ARC OF SAID CURVE THROUGH A CENTRAL ANGLE OF 70°31'44", AN ARC DISTANCE OF 30.77 FEET TO THE POINT OF TANGENCY; S08°09'02"W, 53.76 FEET TO THE POINT OF CURVATURE OF A CURVE CONCAVE EASTERLY AND HAVING A RADIUS OF 525.00 FEET; THENCE SOUTHERLY ALONG THE ARC OF SAID CURVE THROUGH A CENTRAL ANGLE OF 13°15'48", AN ARC DISTANCE OF 121.53 FEET; THENCE S05°08'46"E, 116.96 FEET TO THE POINT OF CURVATURE OF A CURVE CONCAVE NORTHEASTERLY AND HAVING A RADIUS OF 175.00 FEET; THENCE SOUTHEASTERLY ALONG THE ARC OF SAID CURVE THROUGH A CENTRAL ANGLE OF 12°10'32", AN ARC DISTANCE OF 37.19 FEET; THENCE S79°35'49"W, 67.23 FEET; THENCE S52°08'11"E, 16.40 FEET; THENCE S13°49'11"E, 207.74 FEET; THENCE S89°38'31"E, 160.00 FEET; THENCE N00°21'29"E, 100.00 FEET; THENCE S89°38'31"E, 137.86 FEET; THENCE S64°13'11"E, 653.77 FEET; THENCE S37°42'31"E, 522.75 FEET; THENCE S89°38'51"E, 375.49 FEET; MORE OR LESS, TO A POINT ON THE WEST LINE OF GOVERNMENT LOT 1 OF SAID SECTION 28; THENCE S00°25'31"W, ALONG SAID WEST LINE OF GOVERNMENT LOT 1, A DISTANCE OF 670.21 FEET TO A POINT 10.00 FEET (BY PERPENDICULAR MEASUREMENT) SOUTHERLY OF THE NORTH LINE OF THE SOUTHEAST 1/4 OF SAID SECTION 28; THENCE N89°38'29"W, PARALLEL WITH SAID NORTH LINE, 698.33 FEET TO A POINT ON THE WESTERLY BOUNDARY OF THOSE LANDS DESCRIBED IN OFFICIAL RECORDS BOOK 777, PAGE 648, PUBLIC RECORDS OF SUMTER COUNTY, FLORIDA; THENCE ALONG SAID WESTERLY BOUNDARY LINE THE FOLLOWING COURSES: RUN S00°22'41"W, 300.34 FEET; THENCE S48°11'55"W, 170.00 FEET; THENCE S37°07'09"W, 92.46 FEET; THENCE S23°16'23"W, 100.04 FEET; THENCE S20°23'25"W, 95.90 FEET; THENCE S12°33'53"W, 94.30 FEET; THENCE S10°19'32"W, 212.94 FEET; THENCE S07°27'04"W, 212.81 FEET; THENCE DEPARTING SAID WESTERLY BOUNDARY OF LANDS DESCRIBED IN OFFICIAL RECORDS BOOK 777, PAGE 648, RUN S36°42'54"E, 163.11 FEET; THENCE S89°37'33"E, 1119.63 FEET; THENCE S00°15'26"E, 389.67 FEET; THENCE S68°52'45"W, 484.67 FEET; THENCE N86°07'20"W, 625.21 FEET; THENCE N49°46'10"W, 109.83 FEET; THENCE N84°21'33"W, 110.55 FEET; THENCE S58°34'32"W, 115.60 FEET; THENCE S12°57'45"W, 132.68 FEET; THENCE S10°12'28"E, 61.14 FEET TO A POINT ON THE ARC OF A NON-TANGENT CURVE CONCAVE SOUTHWESTERLY, AND HAVING A RADIUS OF 480.00 FEET, AND A CHORD BEARING AND DISTANCE OF S29°18'46"E, 546.33 FEET; THENCE SOUTHEASTERLY ALONG THE ARC OF SAID CURVE, THROUGH A CENTRAL ANGLE OF 69°22'26", AN ARC DISTANCE OF 581.19 FEET; THENCE S05°22'27"W, 132.44 FEET; THENCE S78°54'31"E, 454.14 FEET; THENCE N75°17'46"E, 101.72 FEET; THENCE N32°52'53"E, 149.73 FEET; THENCE N80°47'13"E, 502.48 FEET; THENCE N45°17'31"E, 126.00 FEET; THENCE N13°35'35"E, 30.80 FEET; THENCE N11°13'50"E, 355.52 FEET; THENCE N18°48'18"W,

152.90 FEET TO A POINT ON THE ARC OF A NON-TANGENT CURVE CONCAVE SOUTHEASTERLY, AND HAVING A RADIUS OF 975.00 FEET AND A CHORD BEARING AND DISTANCE OF N60°29'02"E, 63.27 FEET; THENCE NORTHEASTERLY ALONG THE ARC OF SAID CURVE THROUGH A CENTRAL ANGLE OF 03°43'07", AN ARC DISTANCE OF 63.28 FEET; THENCE N62°20'36"E, 361.94 FEET TO THE POINT OF CURVATURE OF A CURVE CONCAVE SOUTHERLY AND HAVING A RADIUS OF 225.00 FEET; THENCE EASTERLY ALONG THE ARC OF SAID CURVE THROUGH A CENTRAL ANGLE OF 31°33'33", AN ARC DISTANCE OF 123.93 FEET; THENCE S03°54'08"W, ALONG A RADIAL LINE, 104.20 FEET; THENCE S66°46'43"E, 603.40 FEET; THENCE N90°00'00"E, 211.58 FEET; THENCE S00°00'00"E, 171.56 FEET TO THE POINT OF CURVATURE OF A CURVE CONCAVE EASTERLY AND HAVING A RADIUS OF 1225.00 FEET; THENCE SOUTHERLY ALONG THE ARC OF SAID CURVE THROUGH A CENTRAL ANGLE OF 08°57'48", AN ARC DISTANCE OF 191.64 FEET; THENCE N84°24'39"W, 349.90 FEET; THENCE S75°02'54"W, 83.04 FEET; THENCE S63°30'37"W, 83.78 FEET; THENCE S18°54'27"W, 105.13 FEET; THENCE S07°19'00"E, 78.58 FEET; THENCE S46°01'45"W, 115.83 FEET; THENCE N81°08'06"W, 462.98 FEET; THENCE S00°35'49"W, 592.28 FEET; THENCE S73°09'21"W, 261.92 FEET; THENCE N81°07'38"W, 479.92 FEET; THENCE S82°49'18"W, 306.89 FEET; THENCE N62°13'19"W, 324.44 FEET; THENCE N87°49'53"W, 90.27 FEET; THENCE S58°32'46"W, 91.93 FEET; THENCE N84°37'33"W, 60.00 FEET; THENCE N05°22'27"E, 50.06 FEET TO THE POINT ON THE ARC OF A CURVE CONCAVE SOUTHWESTERLY AND HAVING A RADIUS OF 20.00 FEET; THENCE NORTHERLY AND NORTHWESTERLY ALONG THE ARC OF SAID CURVE THROUGH A CENTRAL ANGLE OF 90°00'00", AN ARC DISTANCE OF 31.42 FEET; THENCE N84°37'33"W, 66.18 FEET TO THE POINT OF CURVATURE OF A CURVE CONCAVE SOUTHERLY AND HAVING A RADIUS OF 255.00 FEET; THENCE WESTERLY ALONG THE ARC OF SAID CURVE THROUGH A CENTRAL ANGLE OF 17°30'00", AN ARC DISTANCE OF 77.89 FEET TO THE POINT OF REVERSE CURVATURE OF A CURVE CONCAVE NORTHERLY AND HAVING A RADIUS OF 235.00 FEET; THENCE WESTERLY ALONG THE ARC OF SAID CURVE THROUGH A CENTRAL ANGLE OF 21°03'23", AN ARC DISTANCE OF 86.36 FEET; THENCE S32°28'50"W, 662.15 FEET; THENCE S61°14'25"W, 109.70 FEET; THENCE S90°00'00"W, 231.80 FEET; THENCE S49°32'04"W, 171.13 FEET; THENCE S00°51'19"E, 362.25 FEET; THENCE S45°22'46"E, 142.28 FEET; THENCE N77°44'16"E, 302.09 FEET; THENCE S65°31'59"E, 58.21 FEET; THENCE S55°18'37"E, 282.37 FEET; THENCE S11°17'14"W, 206.81 FEET; THENCE S52°56'57"W, 483.50 FEET; THENCE S79°23'40"W, 110.45 FEET; THENCE N74°09'36"W, 221.83 FEET; THENCE N62°03'15"W, 66.48 FEET; THENCE N54°09'45"W, 60.80 FEET; THENCE N73°07'59"W, 281.58 FEET; THENCE S65°15'58"W, 142.58 FEET TO A POINT ON THE WEST LINE OF THE SOUTHEAST 1/4 OF THE NORTHWEST 1/4 OF SAID SECTION 33; THENCE S00°30'29"W, ALONG SAID WEST LINE, 536.85 FEET TO A POINT ON THE NORTHERLY RIGHT OF WAY LINE OF COUNTY ROAD NO. 132; THENCE S89°35'52"E, ALONG SAID NORTHERLY RIGHT OF WAY LINE, 232.62 FEET TO THE NORTHERLY EXTENSION OF THE WEST LINE OF THE EAST 1/4 OF THE SOUTHWEST 1/4 OF SAID SECTION 33; THENCE DEPARTING SAID NORTHERLY RIGHT OF WAY LINE, ALONG SAID NORTHERLY EXTENSION AND THE WEST LINE THEREOF, RUN S00°29'08"W, 1944.50 FEET; THENCE DEPARTING SAID WEST LINE, RUN S76°41'19"W, 132.74 FEET; THENCE S79°07'41"W, 105.40 FEET; THENCE S81°48'29"W, 95.13 FEET; THENCE S87°26'32"W, 159.77 FEET; THENCE N88°46'48"W, 410.04 FEET; THENCE S80°06'20"W, 184.54 FEET; THENCE N89°56'27"W, 480.42 FEET TO A POINT ON THE WEST LINE OF THE SOUTHWEST 1/4 OF SAID SECTION 33; THENCE S00°30'01"W, ALONG SAID WEST LINE, 624.00 FEET TO THE SOUTHWEST CORNER OF AFORESAID SECTION 33; THENCE S89°35'55"E, ALONG THE SOUTH LINE OF SAID SOUTHWEST 1/4, A DISTANCE OF 2649.93 FEET TO THE SOUTHWEST CORNER OF THE SOUTHEAST 1/4 OF SAID SECTION 33; THENCE S89°38'03"E, ALONG THE SOUTH LINE OF SAID SOUTHEAST 1/4, A DISTANCE OF 1984.01 FEET TO THE POINT OF BEGINNING.

LESS ANY PORTION THEREOF LYING WITHIN THE RIGHT OF WAY OF COUNTY ROAD NO. 462.

AND

COMMENCE AT THE NORTHWEST CORNER OF AFORESAID SECTION 34; THENCE S00°25'46"W, ALONG THE WEST LINE OF THE NORTHWEST 1/4 OF SAID SECTION 34, A DISTANCE OF 973.98 FEET; THENCE DEPARTING SAID WEST LINE, S89°34'14"E, 68.85 FEET TO THE POINT OF BEGINNING; THENCE S86°26'01"E, 409.96 FEET; THENCE N58°12'52"E, 34.63 FEET; THENCE N22°54'44"E, 69.09 FEET; THENCE N84°55'57"E, 719.73 FEET; THENCE S74°53'44"E, ALONG A RADIAL

LINE 50.00 FEET TO A POINT ON THE ARC OF A CURVE CONCAVE WESTERLY, AND HAVING A RADIUS OF 802.76 FEET, AND A CHORD BEARING AND DISTANCE OF S18°11'11"W, 86.31 FEET; THENCE SOUTHERLY ALONG THE ARC OF SAID CURVE, THROUGH A CENTRAL ANGLE OF 06°09'49", AN ARC DISTANCE OF 86.36 FEET TO THE POINT OF COMPOUND CURVATURE OF A CURVE CONCAVE NORTHWESTERLY AND HAVING A RADIUS OF 150.00 FEET; THENCE SOUTHWESTERLY ALONG THE ARC OF SAID CURVE THROUGH A CENTRAL ANGLE OF 09°57'10", AN ARC DISTANCE OF 26.06 FEET; THENCE S00°25'19"W, 571.27 FEET; THENCE S61°15'30"W, 70.63 FEET; THENCE S49°19'08"W, 81.82 FEET; THENCE S35°40'22"W, 66.66 FEET; THENCE S23°36'12"W, 64.08 FEET; THENCE S03°39'15"W, 58.41 FEET; THENCE S04°19'06"E, 65.92 FEET; THENCE S18°40'32"E, 96.89 FEET; THENCE S41°50'04"E, 31.63 FEET; THENCE S47°00'04"W, 777.59 FEET; THENCE S86°33'16"W, 309.56 FEET; THENCE N42°58'08"W, 147.47 FEET; THENCE N01°06'08"W, 268.39 FEET; THENCE N11°23'44"W, 38.08 FEET; THENCE N39°58'45"W, 107.73 FEET; THENCE N00°23'25"E, 1062.03 FEET TO THE POINT OF BEGINNING.

AND

COMMENCE AT THE NORTHEAST CORNER OF AFORESAID SECTION 34; THENCE S00°27'57"W, ALONG THE EAST LINE OF THE NORTHEAST 1/4 OF SAID SECTION 34, A DISTANCE OF 2628.60 FEET TO THE SOUTHEAST CORNER OF SAID NORTHEAST 1/4; THENCE N89°37'39"W, ALONG THE SOUTH LINE OF SAID NORTHEAST 1/4, A DISTANCE OF 2548.56 FEET TO THE POINT OF BEGINNING, SAID POINT BEING BEGINNING OF A CURVE TO THE RIGHT, OF WHICH THE RADIUS POINT LIES N75°19'34"E, A RADIAL DISTANCE OF 1530.00 FEET AND HAVING A CHORD BEARING AND DISTANCE OF N12°05'31"W, 137.85 FEET; THENCE NORTHERLY ALONG THE ARC, THROUGH A CENTRAL ANGLE OF 05°09'50", A DISTANCE OF 137.90 FEET TO THE POINT OF COMPOUND CURVATURE OF A CURVE CONCAVE EASTERLY, AND HAVING A RADIUS OF 3030.00 FEET; THENCE NORTHERLY ALONG THE ARC OF SAID CURVE, THROUGH A CENTRAL ANGLE OF 07°45'49", AN ARC DISTANCE OF 410.57 FEET; THENCE ALONG A NON-TANGENT LINE N89°37'41"W, 219.96 FEET; THENCE N02°04'54"W, 336.79 FEET; THENCE S85°41'29"E, ALONG A RADIAL LINE, 240.02 FEET TO A POINT ON THE ARC OF A CURVE CONCAVE EASTERLY, AND HAVING A RADIUS OF 3030.00 FEET, AND A CHORD BEARING AND DISTANCE OF N10°52'18"E, 692.63 FEET; THENCE NORTHERLY ALONG THE ARC OF SAID CURVE, THROUGH A CENTRAL ANGLE OF 13°07'34", AN ARC DISTANCE OF 694.15 FEET; THENCE N17°26'05"E, 418.34 FEET TO THE POINT OF CURVATURE OF A CURVE CONCAVE WESTERLY AND HAVING A RADIUS OF 1970.00 FEET; THENCE NORTHERLY ALONG THE ARC OF SAID CURVE THROUGH A CENTRAL ANGLE OF 05°41'23", AN ARC DISTANCE OF 195.63 FEET; THENCE N05°45'17"E, 66.07 FEET TO THE POINT OF CURVATURE OF A CURVE CONCAVE WESTERLY AND HAVING A RADIUS OF 105.00 FEET; THENCE NORTHERLY ALONG THE ARC OF SAID CURVE THROUGH A CENTRAL ANGLE OF 41°38'28", AN ARC DISTANCE OF 76.31 FEET TO THE POINT OF REVERSE CURVATURE OF A CURVE CONCAVE NORTHEASTERLY AND HAVING A RADIUS OF 90.00 FEET; THENCE NORTHWESTERLY ALONG THE ARC OF SAID CURVE THROUGH A CENTRAL ANGLE OF 14°48'39", AN ARC DISTANCE OF 23.26 FEET; THENCE S88°23'44"W, 25.62 FEET TO THE POINT OF CURVATURE OF A CURVE CONCAVE SOUTHERLY AND HAVING A RADIUS OF 1970.00 FEET; THENCE WESTERLY ALONG THE ARC OF SAID CURVE THROUGH A CENTRAL ANGLE OF 01°48'38", AN ARC DISTANCE OF 62.25 FEET; THENCE S86°35'07"W, 255.07 FEET TO THE POINT OF CURVATURE OF A CURVE CONCAVE SOUTHERLY AND HAVING A RADIUS OF 9940.00 FEET; THENCE WESTERLY ALONG THE ARC OF SAID CURVE THROUGH A CENTRAL ANGLE OF 01°48'09", AN ARC DISTANCE OF 312.69 FEET; THENCE S84°46'58"W, 306.58 FEET TO THE POINT OF CURVATURE OF A CURVE CONCAVE SOUTHERLY AND HAVING A RADIUS OF 11970.00 FEET; THENCE WESTERLY ALONG THE ARC OF SAID CURVE THROUGH A CENTRAL ANGLE OF 01°00'13", AN ARC DISTANCE OF 209.68 FEET; THENCE S83°46'45"W, 209.30 FEET TO A POINT ON THE ARC OF A NON-TANGENT CURVE CONCAVE EASTERLY, AND HAVING A RADIUS OF 335.00 FEET, AND A CHORD BEARING AND DISTANCE OF S20°42'42"E, 140.47 FEET; THENCE SOUTHERLY ALONG THE ARC OF SAID CURVE, THROUGH A CENTRAL ANGLE OF 24°12'13", AN ARC DISTANCE OF 141.51 FEET; THENCE S32°48'49"E, 86.34 FEET TO THE POINT OF CURVATURE OF A CURVE CONCAVE WESTERLY AND HAVING A RADIUS OF 256.56 FEET; THENCE SOUTHERLY ALONG THE ARC OF SAID CURVE THROUGH A CENTRAL ANGLE OF 32°06'04", AN ARC DISTANCE OF 143.74 FEET; THENCE S00°42'45"E, 89.65 FEET; THENCE S21°35'06"W, 151.52 FEET; THENCE S19°12'16"W, 204.84 FEET;

THENCE S05°57'20"W, 303.98 FEET; THENCE S09°47'14"E, 379.51 FEET; THENCE S42°32'55"W, 1023.87 FEET; THENCE S01°21'23"W, 316.82 FEET; THENCE S74°08'35"E, 733.49 FEET; THENCE S55°40'02"E, 746.59 FEET; THENCE S38°00'06"E, 700.28 FEET; THENCE S41°59'28"E, 526.27 FEET; THENCE N48°00'40"E, 858.55 FEET TO A POINT ON THE ARC OF A NON-TANGENT CURVE CONCAVE NORTHEASTERLY, AND HAVING A RADIUS OF 500.00 FEET AND A CHORD BEARING AND DISTANCE OF N37°22'10"W, 24.13 FEET; THENCE NORTHWESTERLY ALONG THE ARC OF SAID CURVE THROUGH A CENTRAL ANGLE OF 02°45'56", AN ARC DISTANCE OF 24.14 FEET TO THE POINT OF REVERSE CURVATURE OF A CURVE CONCAVE SOUTHWESTERLY AND HAVING A RADIUS OF 500.00 FEET; THENCE NORTHWESTERLY ALONG THE ARC OF SAID CURVE THROUGH A CENTRAL ANGLE OF 09°59'05", AN ARC DISTANCE OF 87.13 FEET TO THE POINT OF REVERSE CURVATURE OF A CURVE CONCAVE NORTHEASTERLY AND HAVING A RADIUS OF 5750.00 FEET; THENCE NORTHWESTERLY ALONG THE ARC OF SAID CURVE THROUGH A CENTRAL ANGLE OF 09°21'02", AN ARC DISTANCE OF 938.39 FEET TO THE POINT OF COMPOUND CURVATURE OF A CURVE CONCAVE NORTHEASTERLY AND HAVING A RADIUS OF 1530.00 FEET; THENCE NORTHWESTERLY ALONG THE ARC OF SAID CURVE, THROUGH A CENTRAL ANGLE OF 21°56'49", AN ARC DISTANCE OF 586.06 FEET TO THE POINT OF BEGINNING.

AND

THAT LAND LYING IN SECTION 23, TOWNSHIP 18 SOUTH, RANGE 23 EAST, SUMTER COUNTY, FLORIDA, DESCRIBED AS FOLLOWS:

FROM THE NORTHWEST CORNER OF TRACT "O" LAKE SUMTER LANDING AS RECORDED IN PLAT BOOK 8, PAGE 28 THROUGH 28I, INCLUSIVE, PUBLIC RECORDS OF SUMTER COUNTY, FLORIDA, RUN ALONG THE SOUTHWESTERLY BOUNDARY THEREOF THE FOLLOWING COURSES: S13°17'51"E, 20.06 FEET TO THE POINT OF BEGINNING; THENCE CONTINUE S13°17'51"E, 4.61 FEET TO A POINT ON THE ARC OF A CURVE CONCAVE SOUTHEASTERLY, HAVING A RADIUS OF 25.00 FEET AND A CHORD BEARING AND DISTANCE OF S35°46'11"W, 4.63 FEET; THENCE DEPARTING THE SOUTHWESTERLY BOUNDARY OF SAID TRACT "O", SOUTHWESTERLY ALONG THE ARC OF SAID CURVE, THROUGH A CENTRAL ANGLE OF 10°37'23", A DISTANCE OF 4.64 FEET TO THE POINT OF TANGENCY; THENCE S30°27'30"W, 47.14 FEET; THENCE S34°49'05"E, 98.40 FEET TO THE SOUTHWESTERLY BOUNDARY OF SAID TRACT "O"; THENCE S69°31'28"E, ALONG THE SOUTHWESTERLY BOUNDARY OF SAID TRACT "O" AND THE SOUTHEASTERLY EXTENSION THEREOF, 187.21 FEET TO THE NORTHWESTERLY EXTENSION OF THE SOUTHWESTERLY BOUNDARY OF SAID TRACT "O"; THENCE S45°55'53"E, ALONG SAID NORTHWESTERLY-EXTENSION AND SOUTHWESTERLY BOUNDARY, 204.82 FEET; THENCE DEPARTING SAID SOUTHWESTERLY BOUNDARY, S10°51'45"E, 119.60 FEET TO A POINT ON A CURVE THAT IS 55.00 FEET NORTHWEST OF AND CONCENTRIC WITH THE NORTHERLY RIGHT-OF-WAY OF STILLWATER TRAIL AS SHOWN ON VILLAGES OF SUMTER UNIT NO. 107 AS RECORDED IN PLAT BOOK 7, PAGES 22 THROUGH 22D, INCLUSIVE, PUBLIC RECORDS OF SUMTER COUNTY, FLORIDA; SAID CURVE BEING CONCAVE SOUTHERLY, HAVING A RADIUS OF 2,615.00 FEET AND A CHORD BEARING AND DISTANCE OF S68°51'52"W, 932.70 FEET; THENCE WESTERLY ALONG THE ARC OF SAID CONCENTRIC CURVE, THROUGH A CENTRAL ANGLE OF 20°32'45", A DISTANCE OF 937.72 FEET; THENCE S76°55'43"W, 89.90 FEET; THENCE N85°40'52"W, 232.41 FEET; THENCE N26°29'30"W, 163.99 FEET; THENCE N31°24'07"W, 206.94 FEET; THENCE N37°20'44"W, 137.93 FEET; THENCE N36°29'23"W, 145.64 FEET; THENCE N33°07'17"W, 147.76 FEET; THENCE N26°44'17"W, 221.79 FEET; THENCE N17°19'43"W, 239.48 FEET; THENCE N23°04'23"W, 66.73 FEET; THENCE N34°00'00"W, 71.24 FEET; THENCE N04°14'08"W, 136.70 FEET; THENCE N23°45'03"E, 34.85 FEET TO A POINT ON A CURVE THAT IS 10.00 FEET SOUTH OF AND CONCENTRIC WITH THE SOUTHERLY RIGHT-OF-WAY OF OLD MILL RUN AS SHOWN ON SAID PLAT OF LAKE SUMTER LANDING, SAID CURVE BEING CONCAVE SOUTHEASTERLY, HAVING A RADIUS OF 2,961.50 FEET AND A CHORD BEARING AND DISTANCE OF N66°26'18"E, 633.06 FEET; THENCE NORTHEASTERLY ALONG THE ARC OF SAID CONCENTRIC CURVE, THROUGH A CENTRAL ANGLE OF 12°16'16", A DISTANCE OF 634.27 FEET; THENCE DEPARTING SAID CONCENTRIC CURVE, S17°25'34"E, 248.73 FEET; THENCE S12°43'42"E, 150.22 FEET; THENCE S05°34'29"E, 96.53 FEET; THENCE S14°35'59"E, 37.62 FEET; THENCE S26°03'23"E, 206.61 FEET;

THENCE N64°45'28"E, 107.02 FEET; THENCE N66°28'29"E, 96.79 FEET; THENCE N68°11'54"E, 107.89 FEET; THENCE N69°18'19"E, 35.02 FEET; THENCE N69°48'21"E, 101.04 FEET TO A POINT ON A CURVE THAT IS 15.00 FEET WEST OF AND CONCENTRIC WITH THE WESTERLY RIGHT-OF-WAY OF OLD CAMP ROAD AS SHOWN ON SAID PLAT OF LAKE SUMTER LANDING, SAID CURVE BEING CONCAVE NORTHEASTERLY, HAVING A RADIUS OF 543.00 FEET AND A CHORD BEARING AND DISTANCE OF S40°28'02"E, 405.94 FEET; THENCE SOUTHEASTERLY ALONG THE ARC OF SAID CONCENTRIC CURVE, THROUGH A CENTRAL ANGLE OF 43°53'58", A DISTANCE OF 416.04 FEET TO THE POINT OF BEGINNING.

AND

THAT LAND LYING IN SECTIONS 14 AND 15, TOWNSHIP 18 SOUTH, RANGE 23 EAST, SUMTER COUNTY, FLORIDA, BEING PORTIONS OF TRACTS G AND J, VILLAGES OF SUMTER UNIT NO. 105 AS RECORDED IN PLAT BOOK 7, PAGES 32 THROUGH 32H, INCLUSIVE, PUBLIC RECORDS OF SUMTER COUNTY, FLORIDA, DESCRIBED AS FOLLOWS:

BEGIN AT THE NORTHEAST CORNER OF SAID TRACT J, THENCE ALONG THE EASTERLY BOUNDARY THEREOF RUN S00°16'57"W, 405.64 FEET; THENCE DEPARTING SAID EASTERLY BOUNDARY, S27°14'24"W, 80.92 FEET; THENCE S11°22'16"E, 181.61 FEET TO THE EASTERLY BOUNDARY OF SAID TRACT J; THENCE ALONG SAID BOUNDARY, S00°16'57"W, 241.93 FEET TO THE NORTHERLY BOUNDARY OF SAID TRACT I; THENCE ALONG SAID NORTHERLY BOUNDARY THE FOLLOWING COURSES: S55°02'10"E, 37.10 FEET; THENCE S46°27'02"E, 87.05 FEET; THENCE S71°55'04"E, 91.83 FEET; THENCE S82°12'40"E, 114.05 FEET; THENCE S71°03'57"E, 97.40 FEET; THENCE S65°58'34"E, 89.73 FEET; THENCE N88°16'07"E, 88.00 FEET; THENCE N79°26'27"E, 57.10 FEET; THENCE N50°30'45"E, 88.28 FEET; THENCE N42°43'37"E, 57.14 FEET; THENCE N35°51'48"E, 72.13 FEET; THENCE S70°42'52"E, 77.61 FEET; THENCE N80°14'57"E, 91.75 FEET; THENCE N65°34'07"E, 91.24 FEET; THENCE N69°05'46"E, 79.05 FEET; THENCE N63°45'43"E, 64.49 FEET; THENCE N24°24'12"E, 40.93 FEET; THENCE N39°05'47"E, 38.52 FEET; THENCE N70°01'14"E, 61.40 FEET; THENCE S74°20'25"E, 13.02 FEET TO THE WESTERLY BOUNDARY OF SAID TRACT M; THENCE ALONG SAID WESTERLY BOUNDARY: N00°16'57"E, 237.31 FEET; THENCE DEPARTING SAID WESTERLY BOUNDARY, N03°42'35"W, 193.10 FEET; THENCE N14°56'46"W, 126.13 FEET; THENCE N15°37'01"E, 176.12 FEET TO THE SOUTHWEST CORNER OF TRACT F, AS SHOWN ON SAID PLAT OF VILLAGES OF SUMTER UNIT NO.105; THENCE ALONG THE WESTERLY BOUNDARY OF SAID TRACT F, N00°16'57"E, 50.00 FEET TO THE SOUTHERLY RIGHT-OF-WAY OF C-466 AS RECORDED IN OFFICIAL RECORDS BOOK 1085, PAGE 326, PUBLIC RECORDS OF SUMTER COUNTY, FLORIDA; THENCE ALONG SAID SOUTHERLY RIGHT-OF-WAY THE FOLLOWING COURSES: N89°43'03"W, 1,022.31 FEET TO A POINT ON THE ARC OF A CURVE CONCAVE NORTHERLY, HAVING A RADIUS OF 1,980.10 FEET AND A CHORD BEARING AND DISTANCE OF N86°30'02"W, 222.23 FEET; THENCE WESTERLY ALONG THE ARC OF SAID CURVE, THROUGH A CENTRAL ANGLE OF 06°26'02", A DISTANCE OF 222.35 FEET TO A POINT ON THE EASTERLY BOUNDARY OF TRACT H, AS SHOWN ON SAID PLAT OF VILLAGES OF SUMTER UNIT NO.105; THENCE DEPARTING SAID SOUTHERLY RIGHT-OF-WAY AND ALONG SAID EASTERLY BOUNDARY, S00°16'57"W, 50.31 FEET TO THE POINT OF BEGINNING.

RESOLUTION NO. 10-12

A RESOLUTION OF VILLAGE COMMUNITY DEVELOPMENT DISTRICT NO. 8 DIRECTING THE CHAIRMAN AND ALL DISTRICT STAFF TO FILE A PETITION WITH SUMTER COUNTY, FLORIDA, REQUESTING THE PASSAGE OF AN ORDINANCE AMENDING THE DISTRICT'S BOUNDARIES, AND AUTHORIZING SUCH OTHER ACTIONS AS ARE NECESSARY IN FUTUREANCE OF THE BOUNDARY AMENDMENT PROCESS; AND PROVIDING AN EFFECTIVE DATE.

WHEREAS, Village Community Development District No. 8 (the "District") is a unit of special-purpose government established to the Uniform Community Development District Act of 1980, as codified in Chapter 190, *Florida Statutes* ("Uniform Act"), by Sumter County, Florida ("County") by passage of Ordinance No. 04-36 ("Ordinance"); and

WHEREAS, pursuant to the Uniform Act, the District is authorized to construct, acquire, and maintain infrastructure improvements and services including, but not limited to, roads, drainage collection, and water management systems, bridges, water supply and distribution systems, wastewater and reuse systems;

WHEREAS, the District presently consists of 1069.6 acres, more or less, as more fully described in the Ordinance as amended;

WHEREAS, the sole landowner with the District, The Villages of Lake-Sumter, Inc., a Florida corporation ("Developer"), and its affiliates are presently developing real property within and adjacent to the District; and

WHEREAS, the Developer has approached the District and requested the District petition to amend its boundaries to comprise the area described in the attached **Exhibit A**, in an effort to facilitate development of the overall lands as a functionally interrelated community; and

WHEREAS, the proposed amendment to the District's boundaries would result in a net addition of 28.5 acres, more or less, and is within the amendment size restrictions contained within §190.046(1), *Florida Statutes*; and

WHEREAS, the proposed boundary amendment is in the best interests of the District and the area of land within the proposed amended boundaries of the District will continue to be of sufficient size, sufficiently compact, and sufficiently contiguous to be developable as on functionally interrelated community; and

WHEREAS, for the area of land that will lie in the amended boundaries of the District, the District is the best alternative available for delivering community development services and facilities; and

WHEREAS, the area of land that will lie in the amended boundaries of the District is amendable to separate special district government; and

WHEREAS, in order to seek boundary amendment pursuant to Chapter 190, *Florida Statutes*, the District desires to authorize District Staff, including but not limited to legal, engineering, and managerial staff, to provide such services as are necessary throughout the pendency of the boundary amendment process; and

WHEREAS, the retention of any necessary consultants and the work to be performed by District Staff may require the expenditure of certain fees, costs, and other expenses by the District as authorized by the District's Board; and

WHEREAS, the Developer has agreed to provide sufficient funds to the District to reimburse the District for any expenditures including, but not limited to, legal, engineering and other consultant fees, filing fees, administrative, and other expenses, if any; and

WHEREAS, the District desires to petition to amend its boundaries in accordance with the procedures and processes described in Chapter 190, *Florida Statutes*, which processes include the preparation of a petition to the County, the holding of a local hearing in accordance with §190.046(1), *Florida Statutes*, and such other actions as are necessary in furtherance of the boundary amendment process.

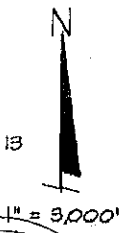
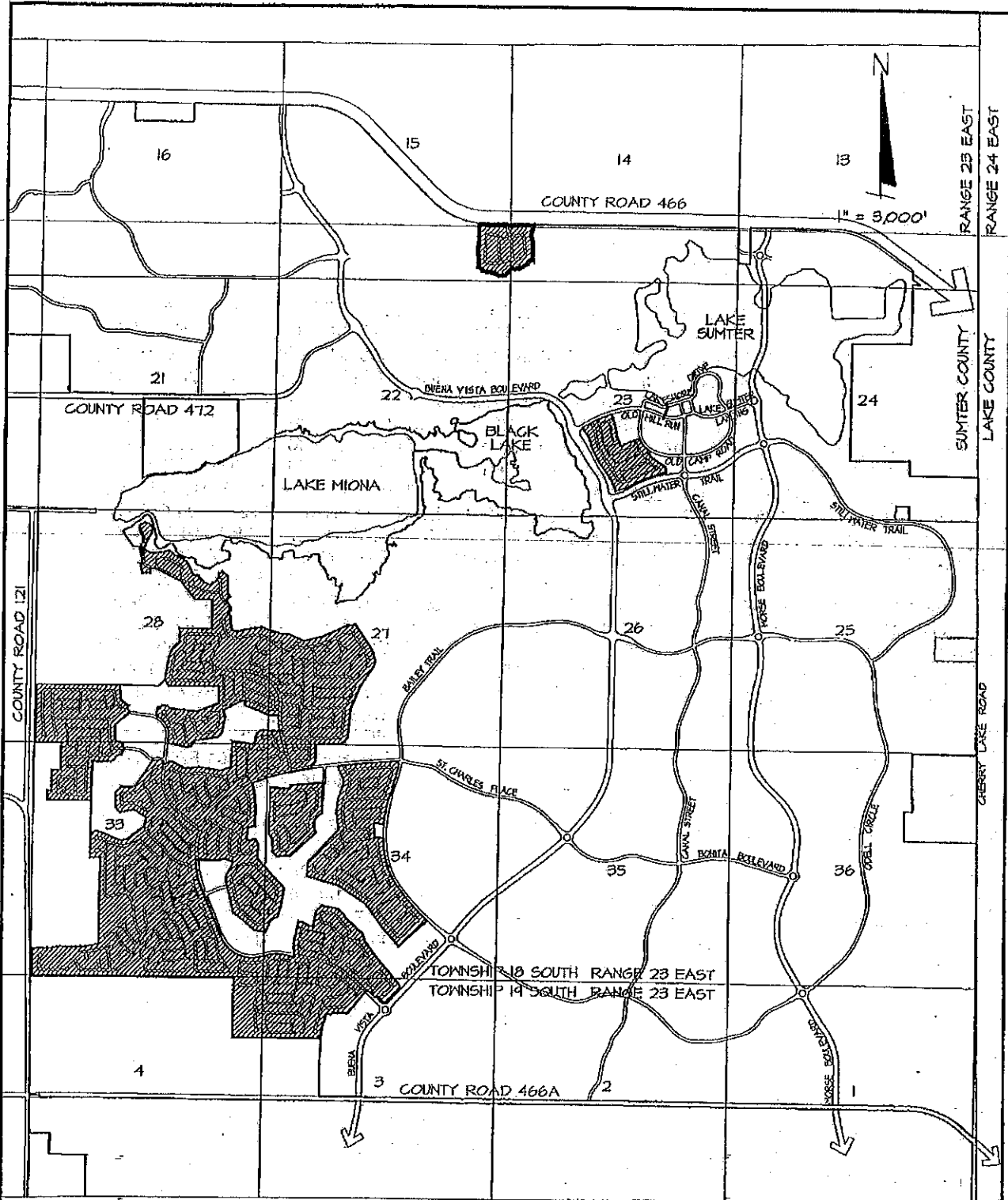
NOW, THEREFORE, BE IT RESEOLVED BY THE BOARD OF SUPERVISORS OF VILLAGE COMMUNITY DEVELOPMENT DISTRICT NO. 8, THAT:

SECTION 1. The recitals as stated above are true and correct and by this reference are incorporated into and form a material part of this Resolution.


SECTION 2. The Board hereby directs the Chairman of the Board of Supervisors and District Staff to proceed in an expeditious manner with the preparation and filing of a petition and related materials with the County to seek amendment of the District's boundaries to comprise the lands described in **Exhibit A**, pursuant to Chapter 190, *Florida Statutes*, and authorizes the prosecution of the procedural requirements detailed in Chapter 190, *Florida Statutes*, for the amendment of the District's boundaries.

[REMAINDER OF PAGE INTENTIONALLY LEFT BLANK]

EXHIBIT A



LEGEND

 AMENDED DISTRICT No. 8 BOUNDARY

Arnett
Environmental, LLC

1038 Lako Sumter Landing The Villages, FL 32162
Tel No. (352)753-4747 Fax No. (352)753-1298
Certificate of Authorization Number: 27495

VILLAGE
COMMUNITY
DEVELOPMENT
DISTRICT No. 8

AMENDED VILLAGE COMMUNITY DEVELOPMENT DISTRICT No. 8

EXHIBIT A

DESCRIPTION OF THE AMENDED
VILLAGE COMMUNITY DEVELOPMENT DISTRICT NO. 8
APPROXIMATELY 1098.1 ACRES

THOSE PORTIONS OF SECTIONS 14, 15, 23, 27, 28, 33 AND 34, TOWNSHIP 18 SOUTH, RANGE 23 EAST, AND SECTIONS 3 AND 4, TOWNSHIP 19 SOUTH, RANGE 23 EAST, ALL IN SUMTER COUNTY, FLORIDA, DESCRIBED AS FOLLOWS:

BEGIN AT THE NORTHWEST CORNER OF SAID SECTION 33; THENCE S89°32'36"E, ALONG THE NORTH LINE OF THE NORTHWEST 1/4 OF SAID SECTION 33, A DISTANCE OF 630.03 FEET TO A POINT ON THE BOUNDARY OF LANDS DESCRIBED IN OFFICIAL RECORDS BOOK 1068, PAGE 413, PUBLIC RECORDS OF SUMTER COUNTY, FLORIDA; THENCE ALONG SAID BOUNDARY THE FOLLOWING COURSES: RUN S00°32'21"W, 630.00 FEET; THENCE N89°31'06"W, 210.00 FEET; THENCE S00°32'21"W, 480.00 FEET; THENCE DEPARTING SAID BOUNDARY OF LANDS DESCRIBED IN OFFICIAL RECORDS BOOK 1068, PAGE 413, RUN N89°31'06"W, 84.04 FEET MORE OR LESS TO A POINT 336 FEET EAST OF THE WEST LINE OF THE NORTHWEST 1/4 OF THE NORTHWEST 1/4 OF SAID SECTION 33; THENCE SOUTH ALONG A LINE PARALLEL WITH AND 336 FEET EAST OF SAID WEST LINE, 204.26 FEET MORE OR LESS TO THE SOUTH LINE OF THE NORTHWEST 1/4 OF THE NORTHWEST 1/4 OF SAID SECTION 33; THENCE EAST ALONG SAID SOUTH LINE 988.5 FEET MORE OR LESS TO THE SOUTHEAST CORNER OF THE NORTHWEST 1/4 OF THE NORTHWEST 1/4 OF SAID SECTION 33; THENCE NORTH ALONG THE EAST LINE OF THE NORTHWEST 1/4 OF THE NORTHWEST 1/4 OF SAID SECTION 33 A DISTANCE OF 630 FEET TO A POINT ON THE BOUNDARY OF LANDS DESCRIBED IN OFFICIAL RECORDS BOOK 1292, PAGE 594, OFFICIAL RECORDS OF SUMTER COUNTY, FLORIDA; THENCE N09°50'45"E, 101.94 FEET; THENCE N00°39'19"E, 163.35 FEET; THENCE N89°25'39"E, 428.61 FEET; THENCE N59°02'06"E, 70.31 FEET; THENCE N30°58'08"E, 104.71 FEET; THENCE N72°45'43"E, 125.57 FEET; THENCE N31°04'43"E, 107.72 FEET; THENCE N02°08'34"E, 48.51 FEET; THENCE N23°41'32"W, 111.23 FEET; THENCE N58°06'08"W, 71.09 FEET; THENCE S85°31'19"W, 78.98 FEET; THENCE N14°59'00"W, 103.67 FEET; THENCE N00°14'58"E, 310.32 FEET; THENCE N51°16'04"E, 389.58 FEET; THENCE, ALONG A RADIAL LINE, N18°58'32"E, 57.01 FEET TO A POINT ON THE ARC OF A CURVE CONCAVE NORTHEASTERLY, AND HAVING A RADIUS OF 650.00 FEET, AND A CHORD BEARING AND DISTANCE OF N67°20'48"W, 83.39 FEET; THENCE NORTHWESTERLY ALONG THE ARC OF SAID CURVE, THROUGH A CENTRAL ANGLE OF 07°21'21", AN ARC DISTANCE OF 83.45 FEET; THENCE ALONG A RADIAL LINE, N26°19'53"E, 105.32 FEET; THENCE N60°40'06"W, 66.91 FEET; THENCE N46°51'13"W, 153.55 FEET; THENCE N03°46'40"W, 328.16 FEET TO THE NORTH LINE OF THE SOUTH 1/2 OF THE SOUTHWEST 1/4 OF SAID SECTION 28; THENCE N89°34'36"W, ALONG SAID NORTH LINE, 1936.58 FEET TO THE NORTHWEST CORNER OF SAID SOUTH 1/2 OF THE SOUTHWEST 1/4 OF SECTION 28; THENCE S00°30'01"W, ALONG THE WEST LINE THEREOF, 1318.63 FEET TO THE POINT OF BEGINNING.

LESS ANY PORTION THEREOF LYING WITHIN THE RIGHT OF WAY OF COUNTY ROAD NO. 121.

AND

COMMENCE AT THE NORTHEAST CORNER OF SAID SECTION 4; THENCE N89°38'03"W, ALONG THE NORTH LINE OF THE EAST 1/2 OF THE NORTHEAST 1/4 OF THE NORTHEAST 1/4 OF SAID SECTION 4, A DISTANCE OF 661.34 FEET TO THE NORTHWEST CORNER THEREOF, SAID POINT ALSO BEING THE POINT OF BEGINNING; THENCE S00°25'57"W, ALONG THE WEST LINE OF SAID EAST 1/2 OF NORTHEAST 1/4 OF THE NORTHEAST 1/4, A DISTANCE OF 1331.77 FEET TO THE SOUTHWEST CORNER THEREOF; THENCE S89°34'02"E, ALONG THE SOUTH LINE OF SAID EAST 1/2 OF THE NORTHEAST 1/4 OF THE NORTHEAST 1/4, A DISTANCE OF 660.08 FEET TO THE SOUTHEAST CORNER THEREOF; THENCE S89°34'12"E, ALONG THE SOUTH LINE OF THE NORTHWEST 1/4 OF THE NORTHWEST 1/4 OF SAID SECTION 3, A DISTANCE OF 1326.15 FEET; THENCE DEPARTING SAID SOUTH LINE, RUN N09°15'48"E, 194.67 FEET; THENCE N14°48'48"E, 363.42 FEET; THENCE

N89°36'08"E, 110.96 FEET; THENCE N70°00'54"E, 56.89 FEET; THENCE N87°18'16"E, 65.76 FEET; THENCE N89°54'18"E, 260.63 FEET; THENCE N39°56'28"E, 621.66 FEET; THENCE ALONG A RADIAL LINE, N42°30'02"E, 60.00 FEET TO A POINT ON THE ARC OF A CURVE CONCAVE SOUTHWESTERLY, AND HAVING A RADIUS OF 6490.00 FEET, AND A CHORD BEARING AND DISTANCE OF S47°19'17"E, 40.38 FEET; THENCE SOUTHEASTERLY ALONG THE ARC OF SAID CURVE, THROUGH A CENTRAL ANGLE OF 00°21'23", AN ARC DISTANCE OF 40.38 FEET; THENCE S47°08'35"E, 88.59 FEET; THENCE S67°15'50"E, 91.68 FEET TO THE POINT OF CURVATURE OF A CURVE CONCAVE SOUTHWESTERLY AND HAVING A RADIUS OF 250.00 FEET; THENCE SOUTHEASTERLY ALONG THE ARC OF SAID CURVE THROUGH A CENTRAL ANGLE OF 07°28'24", AN ARC DISTANCE OF 32.61 FEET; THENCE N87°51'25"E, 71.09 FEET; THENCE S47°08'35"E, 162.62 FEET; THENCE N87°52'13"E, 68.00 FEET; THENCE N42°51'25"E, 454.51 FEET; THENCE N28°14'57"W, 127.68 FEET; THENCE N41°47'57"W, 799.89 FEET; THENCE N36°22'41"W, 391.71 FEET; THENCE N18°36'28"W, 177.72 FEET; THENCE N47°29'39"W, 533.43 FEET; THENCE N32°01'28"W, 75.07 FEET; THENCE N48°51'26"W, 178.79 FEET; THENCE N72°28'18"W, 111.67 FEET; THENCE N79°50'00"W, 268.48 FEET; THENCE S48°51'42"W, 176.81 FEET; THENCE S10°23'25"W, 356.00 FEET; THENCE N79°50'00"W, 106.22 FEET; THENCE N61°10'17"W, 159.09 FEET; THENCE N79°10'32"W, 89.89 FEET; THENCE S12°52'15"W, 223.07 FEET TO THE POINT OF CURVATURE OF A CURVE CONCAVE EASTERLY AND HAVING A RADIUS OF 2635.42 FEET; THENCE SOUTHERLY ALONG THE ARC OF SAID CURVE THROUGH A CENTRAL ANGLE OF 04°54'44", AN ARC DISTANCE OF 225.95 FEET TO THE POINT OF COMPOUND CURVATURE OF A CURVE CONCAVE EASTERLY AND HAVING A RADIUS OF 458.50 FEET; THENCE SOUTHERLY ALONG THE ARC OF SAID CURVE THROUGH A CENTRAL ANGLE OF 09°07'04", AN ARC DISTANCE OF 72.96 FEET; THENCE S01°09'33"E, 282.36 FEET; THENCE N79°50'00"W, 279.69 FEET TO THE POINT OF CURVATURE OF A CURVE CONCAVE SOUTHERLY AND HAVING A RADIUS OF 770.00 FEET; THENCE WESTERLY ALONG THE ARC OF SAID CURVE THROUGH A CENTRAL ANGLE OF 23°45'28", AN ARC DISTANCE OF 319.28 FEET; THENCE S76°24'32"W, 178.28 FEET TO THE POINT OF CURVATURE OF A CURVE CONCAVE NORTHEASTERLY AND HAVING A RADIUS OF 780.00 FEET; THENCE NORTHWESTERLY ALONG THE ARC OF SAID CURVE THROUGH A CENTRAL ANGLE OF 81°38'00", AN ARC DISTANCE OF 1111.32 FEET; THENCE N21°57'28"W, 1137.53 FEET TO THE POINT OF CURVATURE OF A CURVE CONCAVE EASTERLY AND HAVING A RADIUS OF 1780.00 FEET; THENCE NORTHERLY ALONG THE ARC OF SAID CURVE THROUGH A CENTRAL ANGLE OF 19°30'44", AN ARC DISTANCE OF 606.18 FEET; THENCE N02°26'43"W, 62.83 FEET; THENCE S89°50'47"E, 530.37 FEET; THENCE N60°54'16"E, 41.98 FEET; THENCE N74°15'04"E, 74.86 FEET; THENCE S60°06'20"E, 126.72 FEET; THENCE S76°40'18"E, 65.73 FEET; THENCE S03°14'47"W, 71.12 FEET; THENCE S29°34'38"W, 265.86 FEET; THENCE S08°03'58"W, 125.19 FEET; THENCE S13°56'53"E, 110.91 FEET; THENCE S16°32'50"E, 60.27 FEET; THENCE S14°30'02"E, 580.40 FEET; THENCE S60°15'44"E, 94.31 FEET; THENCE S48°46'28"E, 528.82 FEET; THENCE S80°44'48"E, 243.20 FEET; THENCE N25°18'24"E, 330.10 FEET; THENCE N70°15'40"E, 139.43 FEET; THENCE N16°23'38"E, 290.13 FEET; THENCE N08°10'54"E, 376.05 FEET; THENCE N42°18'37"W, 903.18 FEET; THENCE N02°06'27"E, 158.35 FEET; THENCE N10°10'44"E, 75.62 FEET; THENCE N03°54'25"W, 102.37 FEET; THENCE N26°35'45"W, 78.40 FEET; THENCE N59°15'59"W, 39.77 FEET; THENCE N74°39'47"W, 20.65 FEET; THENCE S81°19'19"W, 19.90 FEET; THENCE S70°39'26"W, 41.15 FEET; THENCE S80°32'46"W, 30.31 FEET; THENCE S90°00'00"W, 17.50 FEET; THENCE N72°47'54"W, 26.88 FEET; THENCE N56°59'59"W, 26.01 FEET; THENCE N35°49'40"W, 27.59 FEET; THENCE N02°40'54"W, 23.79 FEET; THENCE N08°19'56"E, 34.96 FEET; THENCE N16°01'55"E, 41.14 FEET; THENCE N05°04'05"E, 27.11 FEET; THENCE N01°02'04"W, 36.49 FEET; THENCE N06°08'59"E, 36.16 FEET; THENCE N16°53'41"E, 31.47 FEET; THENCE N44°00'09"E, 28.90 FEET; THENCE N65°56'37"E, 55.00 FEET; THENCE N80°23'19"E, 42.49 FEET; THENCE N89°06'45"E, 45.41 FEET; THENCE N00°07'30"W, 461.27 FEET TO THE POINT OF CURVATURE OF A CURVE CONCAVE WESTERLY AND HAVING A RADIUS OF 1650.00 FEET; THENCE NORTHERLY ALONG THE ARC OF SAID CURVE THROUGH A CENTRAL ANGLE OF 11°33'51", AN ARC DISTANCE OF 333.02 FEET; THENCE N11°41'21"W, 195.28 FEET TO A POINT ON THE ARC OF A NON-TANGENT CURVE CONCAVE SOUTHERLY, AND HAVING A RADIUS OF 5400.00 FEET, AND A CHORD BEARING AND DISTANCE OF N76°03'30"E, 1386.13 FEET; THENCE EASTERLY ALONG THE ARC OF SAID CURVE, THROUGH A CENTRAL ANGLE OF 14°44'53", AN ARC DISTANCE OF 1389.96 FEET; THENCE N06°34'04"W, 60.00 FEET; THENCE N35°57'01"E, 128.50 FEET; THENCE N00°00'00"E, 382.96 FEET; THENCE N87°48'34"E, 568.47 FEET; THENCE N60°42'03"E, 111.90 FEET; THENCE N31°26'11"E, 111.19 FEET; THENCE N07°04'42"E, 87.10 FEET; THENCE N05°12'27"E, 581.18 FEET; THENCE N24°01'20"E, 564.44 FEET;

THENCE N32°39'58"E, 562.99 FEET; THENCE N14°49'35"E, 74.65 FEET; THENCE N11°43'20"W, 95.43 FEET; THENCE N20°56'05"W, 237.65 FEET; THENCE N34°48'37"W, 644.17 FEET; THENCE S83°07'11"W, 178.87 FEET; THENCE S65°13'16"W, 616.99 FEET; THENCE S76°24'17"W, 444.80 FEET; THENCE N65°12'50"W, 338.19 FEET; THENCE N83°55'01"W, 197.28 FEET; THENCE N74°24'08"W, 184.66 FEET; THENCE N68°23'03"W, 286.17 FEET; THENCE S81°18'19"W, 257.28 FEET; THENCE S78°14'18"W, 151.77 FEET; THENCE S78°21'41"W, 67.38 FEET; THENCE S79°08'14"W, 68.31 FEET; THENCE S81°28'58"W, 22.81 FEET; THENCE S89°06'11"W, 41.00 FEET; THENCE N56°38'45"W, 87.44 FEET; THENCE N08°10'27"W, 100.11 FEET; THENCE N07°21'46"W, 211.46 FEET; THENCE N41°20'44"W, 64.94 FEET; THENCE N48°39'16"E, 5.54 FEET TO THE POINT OF CURVATURE OF A CURVE CONCAVE WESTERLY AND HAVING A RADIUS OF 135.00 FEET; THENCE NORTHERLY ALONG THE ARC OF SAID CURVE THROUGH A CENTRAL ANGLE OF 89°04'47", AN ARC DISTANCE OF 209.89 FEET; THENCE N40°25'31"W, 139.46 FEET; THENCE N49°34'29"E, 125.43 FEET; THENCE N25°53'37"W, 94.61 FEET; THENCE N03°49'11"W, 106.00 FEET; THENCE N09°27'04"E, 108.91 FEET; THENCE N03°49'11"W, 174.65 FEET; THENCE N51°35'04"W, 156.88 FEET; THENCE S62°23'36"W, 92.32 FEET; THENCE S06°37'15"W, 98.05 FEET; THENCE S33°38'06"W, 94.67 FEET; THENCE S63°07'49"W, 81.92 FEET; THENCE S00°22'40"W, 0.88 FEET TO A POINT ON THE ARC OF A CURVE CONCAVE SOUTHEASTERLY, AND HAVING A RADIUS OF 13.75 FEET, AND A CHORD BEARING AND DISTANCE OF S42°50'50"W, 3.20 FEET; THENCE SOUTHWESTERLY ALONG THE ARC OF SAID CURVE, THROUGH A CENTRAL ANGLE OF 13°21'13", AN ARC DISTANCE OF 3.20 FEET; THENCE S36°10'13"W, 59.89 FEET; THENCE N68°12'23"W, 92.31 FEET; THENCE N64°41'19"W, 63.82 FEET TO THE POINT OF CURVATURE OF A CURVE CONCAVE NORTHEASTERLY AND HAVING A RADIUS OF 15.00 FEET; THENCE NORTHWESTERLY ALONG THE ARC OF SAID CURVE THROUGH A CENTRAL ANGLE OF 18°57'48", AN ARC DISTANCE OF 4.96 FEET; THENCE N45°43'31"W, 39.88 FEET; THENCE N41°33'17"W, 105.88 FEET TO THE POINT OF CURVATURE OF A CURVE CONCAVE NORTHEASTERLY AND HAVING A RADIUS OF 28.00 FEET; THENCE NORTHWESTERLY ALONG THE ARC OF SAID CURVE THROUGH A CENTRAL ANGLE OF 10°47'18", AN ARC DISTANCE OF 5.27 FEET; THENCE N30°45'59"W, 41.80 FEET TO THE POINT OF CURVATURE OF A CURVE CONCAVE SOUTHWESTERLY AND HAVING A RADIUS OF 7.50 FEET; THENCE NORTHWESTERLY ALONG THE ARC OF SAID CURVE THROUGH A CENTRAL ANGLE OF 49°37'29", AN ARC DISTANCE OF 6.50 FEET; THENCE N80°23'28"W, 77.53 FEET TO THE POINT OF CURVATURE OF A CURVE CONCAVE NORTHEASTERLY AND HAVING A RADIUS OF 6.00 FEET; THENCE NORTHWESTERLY ALONG THE ARC OF SAID CURVE THROUGH A CENTRAL ANGLE OF 28°02'40", AN ARC DISTANCE OF 2.94 FEET; THENCE N52°20'48"W, 76.69 FEET TO THE POINT OF CURVATURE OF A CURVE CONCAVE NORTHEASTERLY AND HAVING A RADIUS OF 8.00 FEET; THENCE NORTHWESTERLY ALONG THE ARC OF SAID CURVE THROUGH A CENTRAL ANGLE OF 42°02'05", AN ARC DISTANCE OF 5.87 FEET; THENCE N10°18'43"W, 76.86 FEET TO THE POINT OF CURVATURE OF A CURVE CONCAVE SOUTHWESTERLY AND HAVING A RADIUS OF 13.00 FEET; THENCE NORTHWESTERLY ALONG THE ARC OF SAID CURVE THROUGH A CENTRAL ANGLE OF 25°13'12", AN ARC DISTANCE OF 5.72 FEET; THENCE N35°31'55"W, 77.54 FEET; THENCE N26°38'23"W, 124.87 FEET TO THE POINT OF CURVATURE OF A CURVE CONCAVE SOUTHWESTERLY AND HAVING A RADIUS OF 8.50 FEET; THENCE NORTHWESTERLY ALONG THE ARC OF SAID CURVE THROUGH A CENTRAL ANGLE OF 29°30'35", AN ARC DISTANCE OF 4.38 FEET; THENCE N56°08'58"W, 59.81 FEET; THENCE N63°45'26"W, 100.06 FEET; THENCE N63°27'44"W, 39.85 FEET; THENCE N60°38'39"W, 100.01 FEET; THENCE N56°15'00"W, 96.32 FEET; THENCE N66°48'27"W, 68.05 FEET TO THE POINT OF CURVATURE OF A CURVE CONCAVE SOUTHERLY AND HAVING A RADIUS OF 7.50 FEET; THENCE WESTERLY ALONG THE ARC OF SAID CURVE THROUGH A CENTRAL ANGLE OF 43°45'14", AN ARC DISTANCE OF 5.73 FEET; THENCE S79°26'19"W, 86.34 FEET; THENCE S80°21'28"W, 118.50 FEET; THENCE N88°50'37"W, 74.11 FEET; THENCE S78°44'39"W, 92.98 FEET; THENCE N83°58'31"W, 64.79 FEET; THENCE N65°22'29"W, 59.36 FEET; THENCE N53°21'50"W, 91.75 FEET; THENCE N11°13'27"W, 0.84 FEET; THENCE N08°09'02"E, 80.92 FEET TO A POINT OF CURVATURE OF A CURVE CONCAVE WESTERLY AND HAVING A RADIUS OF 50.00 FEET; THENCE NORTHERLY ALONG THE ARC OF SAID CURVE THROUGH A CENTRAL ANGLE OF 17°15'04", AN ARC DISTANCE OF 15.05 FEET; THENCE N11°45'22"E, 6.03 FEET; THENCE N22°51'50"E, 74.13 FEET; THENCE N20°57'50"E, 66.30 FEET; THENCE N30°09'07"E, 12.17 FEET; THENCE N32°26'28"E, 95.49 FEET TO THE POINT OF CURVATURE OF A CURVE CONCAVE NORTHWESTERLY AND HAVING A RADIUS OF 26.00 FEET; THENCE NORTHEASTERLY ALONG THE ARC OF SAID CURVE THROUGH A CENTRAL ANGLE OF 14°17'28", AN ARC DISTANCE OF 6.49 FEET; THENCE N18°09'00"E, 89.52 FEET; THENCE N20°40'25"E,

44.60 FEET TO THE POINT OF CURVATURE OF A CURVE CONCAVE WESTERLY AND HAVING A RADIUS OF 8.00 FEET; THENCE NORTHERLY ALONG THE ARC OF SAID CURVE THROUGH A CENTRAL ANGLE OF 34°09'34", AN ARC DISTANCE OF 4.77 FEET; THENCE N13°29'09"W, 49.49 FEET TO THE POINT OF CURVATURE OF A CURVE CONCAVE SOUTHWESTERLY AND HAVING A RADIUS OF 11.75 FEET; THENCE NORTHWESTERLY ALONG THE ARC OF SAID CURVE THROUGH A CENTRAL ANGLE OF 29°39'29", AN ARC DISTANCE OF 6.08 FEET; THENCE N43°08'38"W, 67.40 FEET; THENCE N56°13'09"W, 58.45 FEET; THENCE N70°39'15"W, 59.71 FEET TO THE POINT OF CURVATURE OF A CURVE CONCAVE SOUTHERLY AND HAVING A RADIUS OF 8.00 FEET; THENCE WESTERLY ALONG THE ARC OF SAID CURVE THROUGH A CENTRAL ANGLE OF 50°29'10", AN ARC DISTANCE OF 7.05 FEET; THENCE S58°51'34"W, 107.83 FEET TO THE POINT OF CURVATURE OF A CURVE CONCAVE SOUTHEASTERLY AND HAVING A RADIUS OF 9.25 FEET; THENCE SOUTHWESTERLY ALONG THE ARC OF SAID CURVE THROUGH A CENTRAL ANGLE OF 34°12'23", AN ARC DISTANCE OF 5.52 FEET; THENCE S24°39'12"W, 67.72 FEET TO THE POINT OF CURVATURE OF A CURVE CONCAVE EASTERLY AND HAVING A RADIUS OF 7.00 FEET; THENCE SOUTHERLY ALONG THE ARC OF SAID CURVE THROUGH A CENTRAL ANGLE OF 43°53'24", AN ARC DISTANCE OF 5.36 FEET; THENCE S19°14'12"E, 62.83 FEET; THENCE S25°13'18"E, 74.70 FEET; THENCE S18°50'18"E, 47.23 FEET; THENCE S14°55'54"E, 7.51 FEET; THENCE S34°24'08"E, 42.31 FEET; THENCE S05°10'32"W, 121.04 FEET TO THE POINT OF CURVATURE OF A CURVE CONCAVE NORTHWESTERLY AND HAVING A RADIUS OF 25.00 FEET; THENCE SOUTHWESTERLY ALONG THE ARC OF SAID CURVE THROUGH A CENTRAL ANGLE OF 59°52'27", AN ARC DISTANCE OF 26.12 FEET TO THE POINT OF REVERSE CURVATURE OF A CURVE CONCAVE EASTERLY AND HAVING A RADIUS OF 50.00 FEET; THENCE SOUTHWESTERLY, SOUTHERLY AND SOUTHEASTERLY ALONG THE ARC OF SAID CURVE THROUGH A CENTRAL ANGLE OF 127°25'40", AN ARC DISTANCE OF 111.20 FEET TO THE POINT OF REVERSE CURVATURE OF A CURVE CONCAVE SOUTHWESTERLY AND HAVING A RADIUS OF 25.00 FEET; THENCE SOUTHEASTERLY ALONG THE ARC OF SAID CURVE THROUGH A CENTRAL ANGLE OF 70°31'44", AN ARC DISTANCE OF 30.77 FEET TO THE POINT OF TANGENCY; S08°09'02"W, 53.76 FEET TO THE POINT OF CURVATURE OF A CURVE CONCAVE EASTERLY AND HAVING A RADIUS OF 525.00 FEET; THENCE SOUTHERLY ALONG THE ARC OF SAID CURVE THROUGH A CENTRAL ANGLE OF 13°15'48", AN ARC DISTANCE OF 121.53 FEET; THENCE S05°06'46"E, 116.96 FEET TO THE POINT OF CURVATURE OF A CURVE CONCAVE NORTHEASTERLY AND HAVING A RADIUS OF 175.00 FEET; THENCE SOUTHEASTERLY ALONG THE ARC OF SAID CURVE THROUGH A CENTRAL ANGLE OF 12°10'32", AN ARC DISTANCE OF 37.19 FEET; THENCE S79°35'49"W, 67.23 FEET; THENCE S52°08'11"E, 16.40 FEET; THENCE S13°49'11"E, 207.74 FEET; THENCE S89°38'31"E, 160.00 FEET; THENCE N00°21'29"E, 100.00 FEET; THENCE S89°38'31"E, 137.86 FEET; THENCE S64°13'11"E, 653.77 FEET; THENCE S37°42'31"E, 522.75 FEET; THENCE S89°38'51"E, 375.49 FEET; MORE OR LESS, TO A POINT ON THE WEST LINE OF GOVERNMENT LOT 1 OF SAID SECTION 28; THENCE S00°25'31"W, ALONG SAID WEST LINE OF GOVERNMENT LOT 1, A DISTANCE OF 670.21 FEET TO A POINT 10.00 FEET (BY PERPENDICULAR MEASUREMENT) SOUTHERLY OF THE NORTH LINE OF THE SOUTHEAST 1/4 OF SAID SECTION 28; THENCE N89°38'29"W, PARALLEL WITH SAID NORTH LINE, 698.33 FEET TO A POINT ON THE WESTERLY BOUNDARY OF THOSE LANDS DESCRIBED IN OFFICIAL RECORDS BOOK 777, PAGE 648, PUBLIC RECORDS OF SUMTER COUNTY, FLORIDA; THENCE ALONG SAID WESTERLY BOUNDARY LINE THE FOLLOWING COURSES: RUN S00°22'41"W, 300.34 FEET; THENCE S48°11'55"W, 170.00 FEET; THENCE S37°07'09"W, 92.46 FEET; THENCE S23°16'23"W, 100.04 FEET; THENCE S20°23'25"W, 95.90 FEET; THENCE S12°33'53"W, 94.30 FEET; THENCE S10°19'32"W, 212.94 FEET; THENCE S07°27'04"W, 212.81 FEET; THENCE DEPARTING SAID WESTERLY BOUNDARY OF LANDS DESCRIBED IN OFFICIAL RECORDS BOOK 777, PAGE 648, RUN S36°42'54"E, 163.11 FEET; THENCE S89°37'33"E, 1119.63 FEET; THENCE S00°15'26"E, 389.67 FEET; THENCE S68°52'45"W, 484.67 FEET; THENCE N86°07'20"W, 625.21 FEET; THENCE N49°46'10"W, 109.83 FEET; THENCE N84°21'33"W, 110.55 FEET; THENCE S58°34'32"W, 115.60 FEET; THENCE S12°57'45"W, 132.68 FEET; THENCE S10°12'28"E, 61.14 FEET TO A POINT ON THE ARC OF A NON-TANGENT CURVE CONCAVE SOUTHWESTERLY, AND HAVING A RADIUS OF 480.00 FEET, AND A CHORD BEARING AND DISTANCE OF S29°18'46"E, 546.33 FEET; THENCE SOUTHEASTERLY ALONG THE ARC OF SAID CURVE, THROUGH A CENTRAL ANGLE OF 69°22'26", AN ARC DISTANCE OF 581.19 FEET; THENCE S05°22'27"W, 132.44 FEET; THENCE S78°54'31"E, 454.14 FEET; THENCE N75°17'46"E, 101.72 FEET; THENCE N32°52'53"E, 149.73 FEET; THENCE N80°47'13"E, 502.48 FEET; THENCE N45°17'31"E, 126.00 FEET; THENCE N13°35'35"E, 30.80 FEET; THENCE N11°13'50"E, 355.52 FEET; THENCE N18°48'18"W,

152.90 FEET TO A POINT ON THE ARC OF A NON-TANGENT CURVE CONCAVE SOUTHEASTERLY, AND HAVING A RADIUS OF 975.00 FEET AND A CHORD BEARING AND DISTANCE OF N60°29'02"E, 63.27 FEET; THENCE NORTHEASTERLY ALONG THE ARC OF SAID CURVE THROUGH A CENTRAL ANGLE OF 03°43'07", AN ARC DISTANCE OF 63.28 FEET; THENCE N62°20'36"E, 361.94 FEET TO THE POINT OF CURVATURE OF A CURVE CONCAVE SOUTHERLY AND HAVING A RADIUS OF 225.00 FEET; THENCE EASTERLY ALONG THE ARC OF SAID CURVE THROUGH A CENTRAL ANGLE OF 31°33'33", AN ARC DISTANCE OF 123.93 FEET; THENCE S03°54'08"W, ALONG A RADIAL LINE, 104.20 FEET; THENCE S66°46'43"E, 603.40 FEET; THENCE N90°00'00"E, 211.58 FEET; THENCE S00°00'00"E, 171.56 FEET TO THE POINT OF CURVATURE OF A CURVE CONCAVE EASTERLY AND HAVING A RADIUS OF 1225.00 FEET; THENCE SOUTHERLY ALONG THE ARC OF SAID CURVE THROUGH A CENTRAL ANGLE OF 08°57'48", AN ARC DISTANCE OF 191.64 FEET; THENCE N84°24'39"W, 349.90 FEET; THENCE S75°02'54"W, 83.04 FEET; THENCE S53°30'37"W, 83.78 FEET; THENCE S18°54'27"W, 105.13 FEET; THENCE S07°19'00"E, 78.58 FEET; THENCE S46°01'45"W, 116.83 FEET; THENCE N81°08'06"W, 462.98 FEET; THENCE S00°35'49"W, 592.28 FEET; THENCE S73°09'21"W, 261.92 FEET; THENCE N81°07'38"W, 479.92 FEET; THENCE S82°49'18"W, 306.89 FEET; THENCE N62°13'19"W, 324.44 FEET; THENCE N87°49'53"W, 90.27 FEET; THENCE S58°32'46"W, 91.93 FEET; THENCE N84°37'33"W, 60.00 FEET; THENCE N05°22'27"E, 50.05 FEET TO THE POINT ON THE ARC OF A CURVE CONCAVE SOUTHWESTERLY AND HAVING A RADIUS OF 20.00 FEET; THENCE NORTHERLY AND NORTHWESTERLY ALONG THE ARC OF SAID CURVE THROUGH A CENTRAL ANGLE OF 90°00'00", AN ARC DISTANCE OF 31.42 FEET; THENCE N84°37'33"W, 66.18 FEET TO THE POINT OF CURVATURE OF A CURVE CONCAVE SOUTHERLY AND HAVING A RADIUS OF 255.00 FEET; THENCE WESTERLY ALONG THE ARC OF SAID CURVE THROUGH A CENTRAL ANGLE OF 17°30'00", AN ARC DISTANCE OF 77.89 FEET TO THE POINT OF REVERSE CURVATURE OF A CURVE CONCAVE NORTHERLY AND HAVING A RADIUS OF 235.00 FEET; THENCE WESTERLY ALONG THE ARC OF SAID CURVE THROUGH A CENTRAL ANGLE OF 21°03'23", AN ARC DISTANCE OF 86.36 FEET; THENCE S32°28'50"W, 662.15 FEET; THENCE S61°14'25"W, 109.70 FEET; THENCE S90°00'00"W, 231.80 FEET; THENCE S49°32'04"W, 171.13 FEET; THENCE S00°51'19"E, 362.25 FEET; THENCE S45°22'46"E, 142.28 FEET; THENCE N77°44'16"E, 302.09 FEET; THENCE S65°31'59"E, 58.21 FEET; THENCE S65°18'37"E, 282.37 FEET; THENCE S11°17'14"W, 206.81 FEET; THENCE S62°56'57"W, 483.50 FEET; THENCE S79°23'40"W, 110.45 FEET; THENCE N74°09'36"W, 221.83 FEET; THENCE N62°03'15"W, 66.48 FEET; THENCE N54°09'45"W, 60.80 FEET; THENCE N73°07'59"W, 281.58 FEET; THENCE S65°15'58"W, 142.58 FEET TO A POINT ON THE WEST LINE OF THE SOUTHEAST 1/4 OF THE NORTHWEST 1/4 OF SAID SECTION 33; THENCE S00°30'29"W, ALONG SAID WEST LINE, 536.85 FEET TO A POINT ON THE NORTHERLY RIGHT OF WAY LINE OF COUNTY ROAD NO. 132; THENCE S89°35'52"E, ALONG SAID NORTHERLY RIGHT OF WAY LINE, 232.62 FEET TO THE NORTHERLY EXTENSION OF THE WEST LINE OF THE EAST 1092.00 FEET OF THE SOUTHWEST 1/4 OF SAID SECTION 33; THENCE DEPARTING SAID NORTHERLY RIGHT OF WAY LINE, ALONG SAID NORTHERLY EXTENSION AND THE WEST LINE THEREOF, RUN S00°29'08"W, 1944.50 FEET; THENCE DEPARTING SAID WEST LINE, RUN S76°41'19"W, 132.74 FEET; THENCE S79°07'41"W, 105.40 FEET; THENCE S81°48'29"W, 95.13 FEET; THENCE S87°26'32"W, 159.77 FEET; THENCE N88°46'48"W, 410.04 FEET; THENCE S80°06'20"W, 184.54 FEET; THENCE N89°56'27"W, 480.42 FEET TO A POINT ON THE WEST LINE OF THE SOUTHWEST 1/4 OF SAID SECTION 33; THENCE S00°30'01"W, ALONG SAID WEST LINE, 624.00 FEET TO THE SOUTHWEST CORNER OF AFORESAID SECTION 33; THENCE S89°35'55"E, ALONG THE SOUTH LINE OF SAID SOUTHWEST 1/4, A DISTANCE OF 2649.93 FEET TO THE SOUTHWEST CORNER OF THE SOUTHEAST 1/4 OF SAID SECTION 33; THENCE S89°38'03"E, ALONG THE SOUTH LINE OF SAID SOUTHEAST 1/4, A DISTANCE OF 1984.01 FEET TO THE POINT OF BEGINNING.

LESS ANY PORTION THEREOF LYING WITHIN THE RIGHT OF WAY OF COUNTY ROAD NO. 462.

AND

COMMENCE AT THE NORTHWEST CORNER OF AFORESAID SECTION 34; THENCE S00°25'46"W, ALONG THE WEST LINE OF THE NORTHWEST 1/4 OF SAID SECTION 34, A DISTANCE OF 973.98 FEET; THENCE DEPARTING SAID WEST LINE, S89°34'14"E, 68.85 FEET TO THE POINT OF BEGINNING; THENCE S86°26'01"E, 409.96 FEET; THENCE N58°12'52"E, 34.63 FEET; THENCE N22°54'44"E, 69.09 FEET; THENCE N84°55'57"E, 719.73 FEET; THENCE S74°53'44"E, ALONG A RADIAL

LINE 50.00 FEET TO A POINT ON THE ARC OF A CURVE CONCAVE WESTERLY, AND HAVING A RADIUS OF 802.76 FEET, AND A CHORD BEARING AND DISTANCE OF S18°11'11"W, 86.31 FEET; THENCE SOUTHERLY ALONG THE ARC OF SAID CURVE, THROUGH A CENTRAL ANGLE OF 06°09'49", AN ARC DISTANCE OF 86.36 FEET TO THE POINT OF COMPOUND CURVATURE OF A CURVE CONCAVE NORTHWESTERLY AND HAVING A RADIUS OF 150.00 FEET; THENCE SOUTHWESTERLY ALONG THE ARC OF SAID CURVE THROUGH A CENTRAL ANGLE OF 09°57'10", AN ARC DISTANCE OF 26.06 FEET; THENCE S00°25'19"W, 571.27 FEET; THENCE S61°15'30"W, 70.63 FEET; THENCE S49°19'08"W, 81.82 FEET; THENCE S35°40'22"W, 66.66 FEET; THENCE S23°36'12"W, 64.08 FEET; THENCE S03°39'15"W, 58.41 FEET; THENCE S04°19'06"E, 65.92 FEET; THENCE S18°40'32"E, 96.89 FEET; THENCE S41°50'04"E, 31.63 FEET; THENCE S47°00'04"W, 777.59 FEET; THENCE S86°33'16"W, 309.56 FEET; THENCE N42°58'08"W, 147.47 FEET; THENCE N01°06'08"W, 268.39 FEET; THENCE N11°23'44"W, 38.08 FEET; THENCE N39°58'45"W, 107.73 FEET; THENCE N00°23'25"E, 1062.03 FEET TO THE POINT OF BEGINNING.

AND

COMMENCE AT THE NORTHEAST CORNER OF AFORESAID SECTION 34; THENCE S00°27'57"W, ALONG THE EAST LINE OF THE NORTHEAST 1/4 OF SAID SECTION 34, A DISTANCE OF 2628.60 FEET TO THE SOUTHEAST CORNER OF SAID NORTHEAST 1/4; THENCE N89°37'39"W, ALONG THE SOUTH LINE OF SAID NORTHEAST 1/4, A DISTANCE OF 2548.56 FEET TO THE POINT OF BEGINNING, SAID POINT BEING BEGINNING OF A CURVE TO THE RIGHT, OF WHICH THE RADIUS POINT LIES N75°19'34"E, A RADIAL DISTANCE OF 1530.00 FEET AND HAVING A CHORD BEARING AND DISTANCE OF N12°05'31"W, 137.85 FEET; THENCE NORTHERLY ALONG THE ARC, THROUGH A CENTRAL ANGLE OF 05°09'50", A DISTANCE OF 137.90 FEET TO THE POINT OF COMPOUND CURVATURE OF A CURVE CONCAVE EASTERLY, AND HAVING A RADIUS OF 3030.00 FEET; THENCE NORTHERLY ALONG THE ARC OF SAID CURVE, THROUGH A CENTRAL ANGLE OF 07°45'49", AN ARC DISTANCE OF 410.57 FEET; THENCE ALONG A NON-TANGENT LINE N89°37'41"W, 219.96 FEET; THENCE N02°04'54"W, 336.79 FEET; THENCE S85°41'29"E, ALONG A RADIAL LINE, 240.02 FEET TO A POINT ON THE ARC OF A CURVE CONCAVE EASTERLY, AND HAVING A RADIUS OF 3030.00 FEET, AND A CHORD BEARING AND DISTANCE OF N10°52'18"E, 692.63 FEET; THENCE NORTHERLY ALONG THE ARC OF SAID CURVE, THROUGH A CENTRAL ANGLE OF 13°07'34", AN ARC DISTANCE OF 694.15 FEET; THENCE N17°26'05"E, 418.34 FEET TO THE POINT OF CURVATURE OF A CURVE CONCAVE WESTERLY AND HAVING A RADIUS OF 1970.00 FEET; THENCE NORTHERLY ALONG THE ARC OF SAID CURVE THROUGH A CENTRAL ANGLE OF 05°41'23", AN ARC DISTANCE OF 195.63 FEET; THENCE N05°45'17"E, 66.07 FEET TO THE POINT OF CURVATURE OF A CURVE CONCAVE WESTERLY AND HAVING A RADIUS OF 105.00 FEET; THENCE NORTHERLY ALONG THE ARC OF SAID CURVE THROUGH A CENTRAL ANGLE OF 41°38'28", AN ARC DISTANCE OF 76.31 FEET TO THE POINT OF REVERSE CURVATURE OF A CURVE CONCAVE NORTHEASTERLY AND HAVING A RADIUS OF 90.00 FEET; THENCE NORTHWESTERLY ALONG THE ARC OF SAID CURVE THROUGH A CENTRAL ANGLE OF 14°48'39", AN ARC DISTANCE OF 23.26 FEET; THENCE S88°23'44"W, 25.62 FEET TO THE POINT OF CURVATURE OF A CURVE CONCAVE SOUTHERLY AND HAVING A RADIUS OF 1970.00 FEET; THENCE WESTERLY ALONG THE ARC OF SAID CURVE THROUGH A CENTRAL ANGLE OF 01°48'38", AN ARC DISTANCE OF 62.25 FEET; THENCE S86°35'07"W, 255.07 FEET TO THE POINT OF CURVATURE OF A CURVE CONCAVE SOUTHERLY AND HAVING A RADIUS OF 9940.00 FEET; THENCE WESTERLY ALONG THE ARC OF SAID CURVE THROUGH A CENTRAL ANGLE OF 01°48'09", AN ARC DISTANCE OF 312.69 FEET; THENCE S84°46'58"W, 308.58 FEET TO THE POINT OF CURVATURE OF A CURVE CONCAVE SOUTHERLY AND HAVING A RADIUS OF 11970.00 FEET; THENCE WESTERLY ALONG THE ARC OF SAID CURVE THROUGH A CENTRAL ANGLE OF 01°00'13", AN ARC DISTANCE OF 209.68 FEET; THENCE S83°46'45"W, 209.30 FEET TO A POINT ON THE ARC OF A NON-TANGENT CURVE CONCAVE EASTERLY, AND HAVING A RADIUS OF 335.00 FEET, AND A CHORD BEARING AND DISTANCE OF S20°42'42"E, 140.47 FEET; THENCE SOUTHERLY ALONG THE ARC OF SAID CURVE, THROUGH A CENTRAL ANGLE OF 24°12'13", AN ARC DISTANCE OF 141.51 FEET; THENCE S32°48'49"E, 86.34 FEET TO THE POINT OF CURVATURE OF A CURVE CONCAVE WESTERLY AND HAVING A RADIUS OF 256.56 FEET; THENCE SOUTHERLY ALONG THE ARC OF SAID CURVE THROUGH A CENTRAL ANGLE OF 32°06'04", AN ARC DISTANCE OF 143.74 FEET; THENCE S00°42'45"E, 89.65 FEET; THENCE S21°35'06"W, 151.52 FEET; THENCE S19°12'16"W, 204.84 FEET;

THENCE S05°57'20"W, 303.98 FEET; THENCE S09°47'14"E, 379.51 FEET; THENCE S42°32'55"W, 1023.87 FEET; THENCE S01°21'23"W, 316.82 FEET; THENCE S74°08'35"E, 733.49 FEET; THENCE S56°40'02"E, 746.59 FEET; THENCE S38°00'06"E, 700.28 FEET; THENCE S41°59'28"E, 526.27 FEET; THENCE N48°00'40"E, 858.55 FEET TO A POINT ON THE ARC OF A NON-TANGENT CURVE CONCAVE NORTHEASTERLY, AND HAVING A RADIUS OF 500.00 FEET AND A CHORD BEARING AND DISTANCE OF N37°22'10"W, 24.13 FEET; THENCE NORTHWESTERLY ALONG THE ARC OF SAID CURVE THROUGH A CENTRAL ANGLE OF 02°45'56", AN ARC DISTANCE OF 24.14 FEET TO THE POINT OF REVERSE CURVATURE OF A CURVE CONCAVE SOUTHWESTERLY AND HAVING A RADIUS OF 500.00 FEET; THENCE NORTHWESTERLY ALONG THE ARC OF SAID CURVE THROUGH A CENTRAL ANGLE OF 09°59'05", AN ARC DISTANCE OF 87.13 FEET TO THE POINT OF REVERSE CURVATURE OF A CURVE CONCAVE NORTHEASTERLY AND HAVING A RADIUS OF 5750.00 FEET; THENCE NORTHWESTERLY ALONG THE ARC OF SAID CURVE THROUGH A CENTRAL ANGLE OF 09°21'02", AN ARC DISTANCE OF 938.39 FEET TO THE POINT OF COMPOUND CURVATURE OF A CURVE CONCAVE NORTHEASTERLY AND HAVING A RADIUS OF 1530.00 FEET; THENCE NORTHWESTERLY ALONG THE ARC OF SAID CURVE, THROUGH A CENTRAL ANGLE OF 21°56'49", AN ARC DISTANCE OF 586.06 FEET TO THE POINT OF BEGINNING.

AND

THAT LAND LYING IN SECTION 23, TOWNSHIP 18 SOUTH, RANGE 23 EAST, SUMTER COUNTY, FLORIDA, DESCRIBED AS FOLLOWS:

FROM THE NORTHWEST CORNER OF TRACT "O" LAKE SUMTER LANDING AS RECORDED IN PLAT BOOK 8, PAGE 28 THROUGH 28I, INCLUSIVE, PUBLIC RECORDS OF SUMTER COUNTY, FLORIDA, RUN ALONG THE SOUTHWESTERLY BOUNDARY THEREOF THE FOLLOWING COURSE: S13°17'51"E, 20.06 FEET TO THE POINT OF BEGINNING; THENCE CONTINUE S13°17'51"E, 4.61 FEET TO A POINT ON THE ARC OF A CURVE CONCAVE SOUTHEASTERLY, HAVING A RADIUS OF 25.00 FEET AND A CHORD BEARING AND DISTANCE OF S35°46'11"W, 4.63 FEET; THENCE DEPARTING THE SOUTHWESTERLY BOUNDARY OF SAID TRACT "O", SOUTHWESTERLY ALONG THE ARC OF SAID CURVE, THROUGH A CENTRAL ANGLE OF 10°37'23", A DISTANCE OF 4.64 FEET TO THE POINT OF TANGENCY; THENCE S30°27'30"W, 47.14 FEET; THENCE S34°49'05"E, 98.40 FEET TO THE SOUTHWESTERLY BOUNDARY OF SAID TRACT "O"; THENCE S69°31'28"E, ALONG THE SOUTHWESTERLY BOUNDARY OF SAID TRACT "O" AND THE SOUTHEASTERLY EXTENSION THEREOF, 187.21 FEET TO THE NORTHWESTERLY EXTENSION OF THE SOUTHWESTERLY BOUNDARY OF SAID TRACT "O"; THENCE S45°55'53"E, ALONG SAID NORTHWESTERLY EXTENSION AND SOUTHWESTERLY BOUNDARY, 204.82 FEET; THENCE DEPARTING SAID SOUTHWESTERLY BOUNDARY, S10°51'45"E, 119.60 FEET TO A POINT ON A CURVE THAT IS 55.00 FEET NORTHWEST OF AND CONCENTRIC WITH THE NORTHERLY RIGHT-OF-WAY OF STILLWATER TRAIL AS SHOWN ON VILLAGES OF SUMTER UNIT NO. 107 AS RECORDED IN PLAT BOOK 7, PAGES 22 THROUGH 22D, INCLUSIVE, PUBLIC RECORDS OF SUMTER COUNTY, FLORIDA, SAID CURVE BEING CONCAVE SOUTHERLY, HAVING A RADIUS OF 2,615.00 FEET AND A CHORD BEARING AND DISTANCE OF S68°51'52"W, 932.70 FEET; THENCE WESTERLY ALONG THE ARC OF SAID CONCENTRIC CURVE, THROUGH A CENTRAL ANGLE OF 20°32'45", A DISTANCE OF 937.72 FEET; THENCE S76°55'43"W, 89.90 FEET; THENCE N85°40'52"W, 232.41 FEET; THENCE N26°29'30"W, 153.99 FEET; THENCE N31°24'07"W, 206.94 FEET; THENCE N37°20'44"W, 137.93 FEET; THENCE N36°29'23"W, 145.64 FEET; THENCE N33°07'17"W, 147.76 FEET; THENCE N26°44'17"W, 221.79 FEET; THENCE N17°19'43"W, 239.48 FEET; THENCE N23°04'23"W, 66.73 FEET; THENCE N34°00'00"W, 71.24 FEET; THENCE N04°14'08"W, 136.70 FEET; THENCE N23°45'03"E, 34.85 FEET TO A POINT ON A CURVE THAT IS 10.00 FEET SOUTH OF AND CONCENTRIC WITH THE SOUTHERLY RIGHT-OF-WAY OF OLD MILL RUN AS SHOWN ON SAID PLAT OF LAKE SUMTER LANDING, SAID CURVE BEING CONCAVE SOUTHEASTERLY, HAVING A RADIUS OF 2,961.50 FEET AND A CHORD BEARING AND DISTANCE OF N66°26'18"E, 633.06 FEET; THENCE NORTHEASTERLY ALONG THE ARC OF SAID CONCENTRIC CURVE, THROUGH A CENTRAL ANGLE OF 12°16'16", A DISTANCE OF 634.27 FEET; THENCE DEPARTING SAID CONCENTRIC CURVE, S17°25'34"E, 248.73 FEET; THENCE S12°43'42"E, 150.22 FEET; THENCE S05°34'29"E, 96.53 FEET; THENCE S14°35'59"E, 37.62 FEET; THENCE S26°03'23"E, 206.61 FEET;

THENCE N64°45'28"E, 107.02 FEET; THENCE N66°28'29"E, 96.79 FEET; THENCE N68°11'54"E, 107.89 FEET; THENCE N69°18'19"E, 35.02 FEET; THENCE N69°48'21"E, 101.04 FEET TO A POINT ON A CURVE THAT IS 15.00 FEET WEST OF AND CONCENTRIC WITH THE WESTERLY RIGHT-OF-WAY OF OLD CAMP ROAD AS SHOWN ON SAID PLAT OF LAKE SUMTER LANDING, SAID CURVE BEING CONCAVE NORTHEASTERLY, HAVING A RADIUS OF 543.00 FEET AND A CHORD BEARING AND DISTANCE OF S40°28'02"E, 405.94 FEET; THENCE SOUTHEASTERLY ALONG THE ARC OF SAID CONCENTRIC CURVE, THROUGH A CENTRAL ANGLE OF 43°53'58", A DISTANCE OF 416.04 FEET TO THE POINT OF BEGINNING.

AND

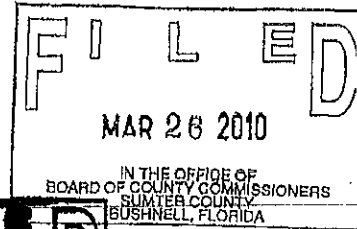
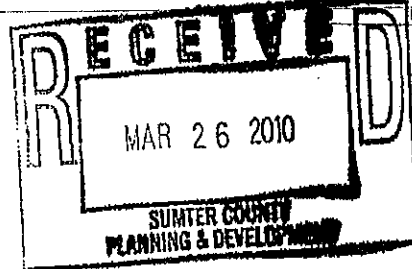
THAT LAND LYING IN SECTIONS 14 AND 15, TOWNSHIP 18 SOUTH, RANGE 23 EAST, SUMTER COUNTY, FLORIDA, BEING PORTIONS OF TRACTS G AND J, VILLAGES OF SUMTER UNIT NO. 105 AS RECORDED IN PLAT BOOK 7, PAGES 32 THROUGH 32H, INCLUSIVE, PUBLIC RECORDS OF SUMTER COUNTY, FLORIDA, DESCRIBED AS FOLLOWS:

BEGIN AT THE NORTHEAST CORNER OF SAID TRACT J, THENCE ALONG THE EASTERLY BOUNDARY THEREOF RUN S00°16'57"W, 405.64 FEET; THENCE DEPARTING SAID EASTERLY BOUNDARY, S27°14'24"W, 80.92 FEET; THENCE S11°22'16"E, 181.61 FEET TO THE EASTERLY BOUNDARY OF SAID TRACT J; THENCE ALONG SAID BOUNDARY, S00°16'57"W, 241.93 FEET TO THE NORTHERLY BOUNDARY OF SAID TRACT I; THENCE ALONG SAID NORTHERLY BOUNDARY THE FOLLOWING COURSES: S55°02'10"E, 37.10 FEET; THENCE S46°27'02"E, 87.05 FEET; THENCE S71°55'04"E, 91.83 FEET; THENCE S82°12'40"E, 114.05 FEET; THENCE S71°03'57"E, 97.40 FEET; THENCE S65°58'34"E, 89.73 FEET; THENCE N88°15'07"E, 88.00 FEET; THENCE N79°26'27"E, 57.10 FEET; THENCE N60°30'45"E, 88.28 FEET; THENCE N42°43'37"E, 57.14 FEET; THENCE N35°51'48"E, 72.13 FEET; THENCE S70°42'52"E, 77.61 FEET; THENCE N80°14'57"E, 91.75 FEET; THENCE N66°34'07"E, 91.24 FEET; THENCE N69°05'46"E, 79.05 FEET; THENCE N63°45'43"E, 64.49 FEET; THENCE N24°24'12"E, 40.93 FEET; THENCE N39°06'47"E, 38.52 FEET; THENCE N70°01'14"E, 61.40 FEET; THENCE S74°20'25"E, 13.02 FEET TO THE WESTERLY BOUNDARY OF SAID TRACT M; THENCE ALONG SAID WESTERLY BOUNDARY: N00°16'57"E, 237.31 FEET; THENCE DEPARTING SAID WESTERLY BOUNDARY, N03°42'35"W, 193.10 FEET; THENCE N14°56'46"W, 126.13 FEET; THENCE N15°37'01"E, 176.12 FEET TO THE SOUTHWEST CORNER OF TRACT F, AS SHOWN ON SAID PLAT OF VILLAGES OF SUMTER UNIT NO. 105; THENCE ALONG THE WESTERLY BOUNDARY OF SAID TRACT F, N00°16'57"E, 50.00 FEET TO THE SOUTHERLY RIGHT-OF-WAY OF C-466 AS RECORDED IN OFFICIAL RECORDS BOOK 1085, PAGE 326, PUBLIC RECORDS OF SUMTER COUNTY, FLORIDA; THENCE ALONG SAID SOUTHERLY RIGHT-OF-WAY THE FOLLOWING COURSES: N89°43'03"W, 1,022.31 FEET TO A POINT ON THE ARC OF A CURVE CONCAVE NORTHERLY, HAVING A RADIUS OF 1,980.10 FEET AND A CHORD BEARING AND DISTANCE OF N86°30'02"W, 222.23 FEET; THENCE WESTERLY ALONG THE ARC OF SAID CURVE, THROUGH A CENTRAL ANGLE OF 06°26'02", A DISTANCE OF 222.35 FEET TO A POINT ON THE EASTERLY BOUNDARY OF TRACT H, AS SHOWN ON SAID PLAT OF VILLAGES OF SUMTER UNIT NO. 105; THENCE DEPARTING SAID SOUTHERLY RIGHT-OF-WAY AND ALONG SAID EASTERLY BOUNDARY, S00°16'57"W, 50.31 FEET TO THE POINT OF BEGINNING.

**VC
DD** COMMUNITY
DEVELOPMENT
DISTRICT 8

March 19, 2010

Mr. Bradley Arnold
County Administrator
Sumter County, Florida
Bushnell, Florida 33513



Dear Mr. Arnold,

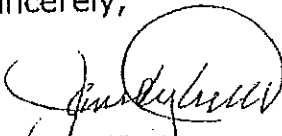
On March 19, 2010, the Village Community Development District No. 8 (District) Board of Supervisors adopted Resolution No. 10-12, directing Staff to file a Petition with the Sumter County Board of County Commissioners requesting the passage of an Ordinance to amend the District's boundaries by approximately 28.5 acres.

Attached is the Petition to amend the District's boundaries which includes Exhibits 1 through 11 and Resolution 10-12 requesting the passage of the Ordinance to amend the District's boundaries along with Exhibit A which provides both a map and Description of the Amended District.

We respectfully request the Board of County Commissioners set a public hearing as soon as possible. In addition, the District will pay for any advertisement costs that may be incurred in the matter.

I appreciate your attention to this matter and should you have any questions or need additional information, please do not hesitate to contact me at (352) 751-3939.

Sincerely,


Janet Y. Tutt
District Manager

Copy To:
Comms _____ Pub Wks Div _____
Co Atty _____ Bldg & Dev Div _____
Co Fin _____ Admin Div _____
Other _____ Com Svcs Div _____