

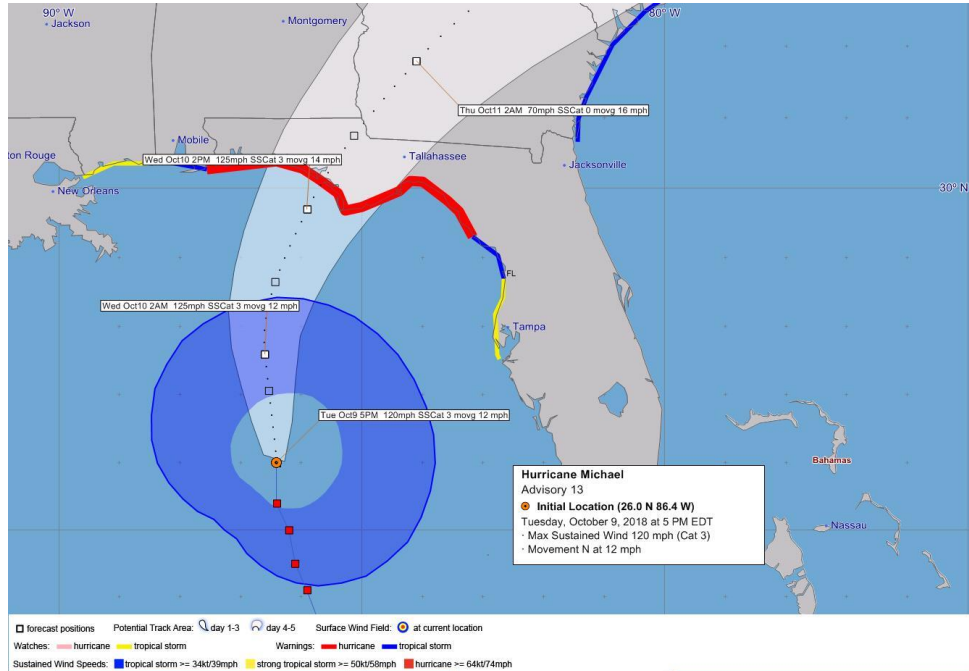


Sumter County Emergency Management

Flash Report # 4

Tropical Storm Michael

10/09/2018 – 1730



Situation Overview

Hurricane Michael is now a major hurricane. The forecasts have verified up to date and remain in tight agreement for a panhandle impact. The threat for Sumter County has diminished slightly in this advisory.

Potential Impacts

- Rain bands may pass through the County tonight with brief periods of heavy rain, tropical storm force gusts, and isolated tornadoes
- One to two inches of rain with periods of heavier rates
- The rapid rise in rivers and stream may occur with heavy rains

Watches/Warnings

- No watches/warnings are issued for Sumter County at this time
- Hurricane and Tropical Storm Warnings are issued from the Tampa Bay coastal areas through the panhandle
- Inland Tropical Storm Watches are issued for the Nature Coast counties and northward

Prepared By: David Casto		Contact Information: 352-689-4400 (office) Emergency.Management@sumtercountyfl.gov
--------------------------	--	---

State Actions

- The State EOC (SEOC) is fully activated and supporting counties
- Governor Scott declared a State of Emergency for 26 counties. Sumter County is not included at this time.
- President Trump did declare Florida as a Disaster Area.
- Non-impacted jurisdictions are preparing for and are deploying to provide mutual aid.

County Actions

- No protective actions have been ordered at this time
- EM staff members are participating in conference calls with the National Hurricane Center/SEOC
- Emergency Services will continue to provide services as normal
- An incident has been established in WebEOC – “2018 Michael”

Recommended Actions

- Monitor the storm very closely
- Ensure that if your organization is providing mutual aid, follow the Statewide Mutual Agreement and like protocols. Self-deployments are discouraged.